



DAVID KLEMER, another member of the Chelsea High school band who appeared in the state solo and ensemble festival last week-end, also received a first division rating for his tympani performance.



ALL THE WAY TO THE STATE FESTIVAL went Duane Luick and his trumpet, for which he received a first division solo rating. The festival was held at Ferndale High school last Saturday.



FOR THEIR DUET, which combined flute and clarinet, Kim Longworth and Patricia Spencer received first division ratings for their performance in last Saturday's state solo and ensemble festival at Ferndale High school.

#### WEATHER

	Min.	Max.	Precip.
Wednesday, March 20	28	38	.00
Thursday, March 21	29	36	.15
Friday, March 22	27	45	.50
Saturday, March 23	10	25	.00
Sunday, March 24	7	21	.01
Monday, March 25	4	30	.00
Tuesday, March 26	27	45	Trace

By H.K.L.

# The Chelsea Standard

ONE HUNDRED-FOURTH YEAR—No. 41

14 Pages This Week

CHELSEA, MICHIGAN, THURSDAY, MARCH 28, 1974

15c per copy

SUBSCRIPTION: \$4.00 PER YEAR

## MCRC Studies Revised Plans For Metropark

Past, present, and future activities of Mill Creek Research Council were the wide-ranging topics covered at the group's ninth annual meeting Tuesday night in Lima Township Hall.

The meeting, which took place only eight days after the formal announcement of a "refined" Mill Creek Metropark plan by Huron-Clinton Metropolitan Authority, predictably centered around the group's action during the past year in opposition to the proposed park and plans for the future.

Elected to the Board of Directors for the coming year were David Bacon, William Chandler, Linda Koch, Arthur Kuhl, Betty Messman, Gerald Myers, Donald Plumb, Donald Raney, Margaret Sias, Sylvester Weber, Robert Wirtz, and David Wolfgang.

In a review of the past year's activities, David Bacon reported first of a hearing conducted last June by Rep. William M. Brodeur regarding Huron Clinton Metropolitan Authority. Major objections established to HCMA included:

—HCMA relies continually upon automobile travel to reach its parks.

—If the parks are truly established for the benefit of large population centers, why are none closer than 10 miles from city limits?

—HCMA lacks public hearings regarding its proposed parks.

—HCMA's basic orientation is to site acquisition and development, rather than development of recreational programs.

HCMA's board of supervisors is unrepresentative of the population of the five-county area it supposedly represents.

Further, Bacon reported on the completion of the Lima township historical study, conducted by University of Michigan graduate students Carol Butz and Phyllis Willbach, the assistance provided by MCRC to the University of Michigan's Environmental Law Society in publication of a booklet regarding HCMA that is presently being distributed to legislators; and the acceptance of the township land use plan and work on the township zoning ordinance.

Virginia Denham, of the Lima Township Planning Board, discussed progress by another U-M graduate student, Harry Hunderman, on his project to relate the historic qualities of the township hall to its present use, and provide drawings for renovation to provide for such use. The aim, Mrs. Denham said, is to make Lima Township Hall "the center of the township."

Off the beaten track of MCRC's own activities, Bacon noted that a group called Citizens for Realistic Priorities, operating in Macomb county, is suing HCMA on the grounds that due process of law and equal protection under law (one man-one vote) have been ignored by HCMA actions.

A show-cause hearing to gain a preliminary injunction against HCMA, scheduled tentatively for (Continued on page six)



TOM BALISTRERE'S BIDDY BASKETBALL PROGRAM came to an end last Saturday, March 23, with an individual skills contest divided into age categories. Points were accumulated through scoring at the various skills of passing, dribbling, shooting, and free throws, and trophies were awarded for first, second, and third places in each age group. Winners pictured above were, front row, from left: seven-year-olds, David Kiel, first;

Richard Slater, second; Mark Porath, third; eight-year-olds, Stanley Gulgas, first; Chris Seitz, second; Brent Martin, third. Second row, from left, are: nine-year-olds, John Welton, first; David Wojcicki, second; Jamie Owings, third; 10-year-olds, Mark Clifton, first; Andy Ahrens, second; Jeff Rowe, third. In back, from left, are Jon Schaffner, Bill Ackley, 11-year-olds Doug Bowens, first; Bob McAllister, second; John Dunn, third; and Pat Wade.

## Ed Walker Claims \$1,000 In Lottery

Chelsea's Ed Walker, one of the 120 semi-finalists in Tuesday's million dollar lottery drawing, didn't win any of the big prizes, but got excited anyway.

"I got real excited down by about the last three people," Walker reported. "And I wasn't even in it! All that anticipation just sort of gets to you, I guess."

As a semi-finalist, Walker has won \$1,000—not a million, but not bad for a man who "never won anything in his life."

## Bridges Takes Basketball Tournament

Lloyd Bridges Chevrolet defeated Dunlavy Farms, 55-51, last Thursday in a contest that proved very close in the closing minutes. Bridges came away with the tournament trophy with this final game of the Recreation League season.

High scorers for Lloyd Bridges were Steele with 14, D. White with 13, and Lixey with 11. Leading Dunlavy were Elliot with 14, Mull with 13, and Miller with 10.

## Manslaughter Charged in Auto Accident

A Chelsea man has been set for examination on two counts of manslaughter resulting from a fiery automobile accident last Saturday on Jackson Rd. near Parker Rd., in Scio township.

Robert Schuelke, 18, of 17718 Old US-12, is charged in the deaths of Joseph W. Simler, 56, and his wife, Virginia, 52.

Schuelke, who was uninjured in the crash, was arraigned Monday before 14th District Court Judge Henry Arkinson on two counts of manslaughter. An examination has been set on the charges for April 3 at 10 a.m. in Chelsea. He was released on \$2,500 personal bond.

Washtenaw County Sheriff's deputies report that the Simlers' Volkswagen was struck from behind by Schuelke's vehicle, which was apparently traveling at a high rate of speed.

The Volkswagen hurtled off the highway, careened over an embankment, and rammed a tree, at which point the gas tank exploded.

Death apparently was caused by the pair inhaling fumes and flames from the fire within the car, although both suffered extensive injuries, deputies said.

## Library Board Officers Elected for Coming Year

Elected officers of the McKune Memorial Library Board March 19 for the coming year are: president, Katherine Wagner; vice-president, James Schardein; secretary, Shirley Schatble; treasurer, Jean Eaton.

## Mame Cast Scores Smashing Success

By Martha Hahn

DiAnn L'Roy has done it again! Hard work, long hours, and the L'Roy expertise have created another excellent production—this one a truly inspirational Mame!

Opening night (Thursday, March 21) found a full house anticipating Chelsea High school's ninth musical, *Mame*. The audience was captivated by a performance that did indeed "coax the blues right out of the horn."

L'Roy didn't achieve success alone. She surrounded herself with talent. EMU coed and 1971 CHS graduate, Joan Yocum, skillfully and cleverly choreographed the show. In fact, she made the chorus "the star" of *Mame*. Yocum's ability was proved again and again in "It's Today," "Open a New Window," "The Moon Song," "That's How Young I Feel," and especially "Mame."

Yocum's task was not an easy one, but she was able to transform 45 left-footed performers into dancers with a capital "D." The difficult acrobatics, and the twisting and turning of "That's How Young I Feel" were fast-paced and really performed in unison. The real show stopper was "Mame." Brilliantly garbed fox hunters and Southern belles charmed the audience with intricate maneuvers that brought applause five times during the number.

If Yocum was L'Roy's right "foot," then Pamela Wilson, tireless rehearsal pianist, was certainly her right hand.

Jeanne Thornton, student director, also worked overtime painting

scenery, making props, altering costumes, and shaping up the cast, half of whom were stage newcomers.

Of course, a solid cast was necessary to create the near-flawless production. What this cast lacked in experience, it made up for in self-discipline and dedication. The result was enthusiastically professional.

Pat Knickerbocker was stunning as Mame from the moment she entered in gold sequins. She played the role with a depth and understanding not usually found in a high school senior. Her strong, rich voice was especially compelling when she sang "If He Walked Into My Life."

Michelle McClear was excellent as Mame's "friend" Vera Charles. McClear's facial expressions, gestures, and tone of voice were superbly controlled. She and Knickerbocker could rival the professionals with their rendition of "Bosom Buddies"—soft shoe and all!

Young (fifth grade) Patrick Powers was charming as young Patrick Dennis. He sang out loud and clear and portrayed his character with the poise of a stage veteran.

Older Patrick was Dale Heydauff, who sang with a pleasant voice, and was believable as a 19-year-old in love for the first time.

Primly proper Agnes Gooch was played convincingly by Jodi Daniels, whose vocal inflection and sense of timing brought laughs throughout the performance. She was funny as she prepared to "live," (Continued on page six)

## Voters Soundly Defeat School Millage Issues

Chelsea School District's request for 14.78 mills for two years for operational purposes was defeated Tuesday by more than a 2-to-1 margin.

Final results were 405 yes, 897 no, with 16 spoiled ballots.

Chelsea's Board of Education, plagued by the effects of the new State Aid Act, this year raised the operational millage request from its past level of 10.98 in order to offset the loss in state aid provided by the bill.

At a special board meeting Tuesday night to certify election results and discuss the implications of those results, members adopted a resolution to request from the Washtenaw County Elections Committee the earliest possible date on which to schedule another special operational millage election.

Board of Education president Howard Haselschwardt stated, "The board, after certifying the election results, expressed extreme disappointment at the loss of the operational millage. Board members are evaluating the implications of the defeat of the millage request on the educational program in the Chelsea School District, in light of the loss of approximately \$1,500,000 of the \$2-

\$75,000 proposed budget. It is not possible at this time for the board to determine the date of a future election, or the millage that might be requested at that time."

## IPSCO Plant Ransacked By Thieves

Industrial Plastic Specialties Co., Inc. (IPSCO), at 20401 W. Old US-12 was ransacked Sunday night by two or more thieves who made off with an undetermined amount of change from machines and a large supply of assorted tools.

Chelsea Police report that the culprits apparently broke through glass in a door in the south basement area to gain entry and proceeded upstairs, where they pried open several tool boxes.

With a welding torch secured somewhere during their adventure, they burnt into hot food, cold drink, coffee, cigarette, and candy machines, and emptied each machine's money box.

(Continued on page three)

## Recreation Council Offering New Courses

Due to community interest, three new courses and a chess tournament have been added to the Recreation Council's offerings, to begin next month.

Registration for the classes may be completed at the first meeting of the respective course or by calling the director, Tom Balistrere, at 475-8511.

Course: Introduction to computer. Begins: Tuesday, April 16, 7-9 p.m.

Place: Room 24, science building, Chelsea High school. Instructor: Chuck Kelly. Fee: \$5.

Description: This six-week course will involve an introduction to computers, simulation games, using programs, and writing simple programs.

Course: Beginning and intermediate tennis. Begins: April 10, continues to May 30.

Beginners, 6:30-8 p.m.; intermediate, 8-9 p.m. Place: Beach Middle school gym. Instructor: Terry Schreiner. Fee: \$5.

Description: Intermediates should know forehand, backhand and serv-

ice. No advanced tennis will be taught at this time. If classes are large, they will be split into half-hour sessions. Classes will meet on Thursday nights.

Course: Chess tournament. Begins: April 16. Tournament director: Dave Evison.

Fee: \$3 for senior division, \$1 for junior division.

Description: Trophies will be awarded the senior winning champion and junior winning champion. Small trophies will be awarded to second place winners in each tournament. Pairing will be done according to lists of entries of contestants. Tournament director will explain the rules and play procedures to all interested participants. Tie breaks will be broken by assigning each player points based on the final position of each opponent he defeated.

Four games will be played on four different nights with approximately a 2½ hour time limit, or two games will be played each night for two nights, with approximately four hours of play. The exact format will be determined later.

(Continued on page six)



A HELPFUL EYE from Mrs. Meiningers aids Mrs. Neva Prudden in her latest ceramics project. Approximately 12 people work daily in the crafts program at the Chelsea United Methodist Home, producing items like Christmas trees and owl nightlights.



# Uncle Lew from Lima Says:

## DEAR MISTER EDITOR:

Folks that run them steak eating places long ago stopped believing in doggy bags. Any man that can afford a steak has got to well in life to be reckless enough to toss even his best rabbit dog a bone with as much meat on it as you see him take home from the cafe. The leftover meat will turn up on his breakfast table with a egg on top of it, or he will hold it back for Sunday dinner. The dog may get to lick the greasy sack.

Now it looks like, Mister Editor, that the fellow that runs the store has quit believing in lawn-mower gas. It used to be a customer could tell him to fill the two-gallon can in the back of the pickup and he would do it. Everybody figured he needed to run the tiller over the old lady's garden, now some grass or maybe mix up a batch for his fishing motor. Here lately, the store fellow won't pump but precious little in pickups, and none at all in cars. It was Bug Hookum that changed his policy.

About ever other evening for a couple of weeks, Bug would get his lawn-mower gas can filled up. The store fellow didn't ask Bug what he was doing with the gas, and Bug didn't say. He just kept hitching a ride to the store with Clem Webster to get his can filled up. It wasn't until somebody mentioned that Clem and Bug was going to the Farming Frontiers show that the truth came out.

Actual, Bug don't have a thing on his little patch that needs gasoline. His old lady hoes the garden, and Bug still trims their patch

of front yard grass with a old man-powered reel mower he keeps in his tip-top shape. What happened was, Clem told Bug he'd take him to the farm show if Bug would take care of the extra gas they'd need to get home after all the service stations closed. So Bug had been buying the gas and storing it in Clem's tractor tank until they got ready to go. Bug had even borrowed two stout five-gallon cans to carry the extra gas in the back of Clem's pickup.

Saturday night at the country store, Clem reported to the fellow that he and Bug didn't get to see Farming Frontiers last week. He said he went down to his tractor shed the morning they had planned to go, and he found somebody had punched a hole in the bottom of his tractor gas tank and drained it dry. Clem said you can't win fer losing. A month ago he bought a lock for the tractor tank, and now he is out the tank and the gas to. It just proves again that folks is fer honest folks, was Clem's words.

The fellow that runs the store said he was sorry Clem's tractor tank was busted, but he was put out about Bug holding that gas under false pretenses. He said maybe the gas was took by somebody desperate, like a young fellow that needed to go see his gal. He said his gas quota don't give him enough to fill extra tanks, and it looks like he's going to have to ask for a note from the preacher to check on all the folks that say they got to have gas to get to church.

Yours truly,  
Uncle Lew.

## What's Cooking In Michigan

By Larrestine Trimm  
Michigan Dept. of Agriculture  
Marketing Information Specialist

Fresh Michigan apples are in shorter supply than in recent years, according to marketing officials of the Michigan Department of Agriculture, but processed apple products can make up the difference. Much of Michigan's apple crop goes to processors for juice, cider, applesauce, pie filling and spiced apple rings, among others.

Both canned and frozen apple products are in moderate supply and they are a real convenience for busy consumers, whether using them for desserts, snacks, appetizers, companions or main dishes.

February is national pork month and pork and apples have a natural affinity. With the pork specials you'll find in area supermarkets, serve warm applesauce with a hint of fresh cinnamon, or spiced apple rings. For still another accompaniment, serve fried apples prepared with canned or frozen apple slices.

An appetizer of tasty cider punch or chilled apple juice may be just the thing to get that special Valentine's Day dinner off to a good start. For dessert bake an apple pie with a convenient canned apple pie filling. Or, if you don't want to be bothered with any mixing at all, buy a frozen Michigan apple pie and pop it in the oven in minutes. Serve it with cheese wedges, cinnamon sauce, or that all-time favorite with apple pie, vanilla ice cream.

For a delightful breakfast treat, serve French toast with pork sausage and applesauce. Or, surprise the family with apple pancakes. To make, prepare pancakes, top with warm apple pie filling and whipped butter.

### PORTUGAL

Portugal has 500 miles of coastline and more than 16,000 fishing boats.

## CHEAPER BY THE SEED...



## ★ MICHIGAN MIRROR ★

By Elmer E. White, Secretary, Michigan Press Association

### Ban Handguns?

That's what Detroit Police Commissioner Philip G. Tannian wants to do, via a proposed constitutional amendment that would go on the November general election ballot. But Tannian ran into a bit of opposition, from his own boss, Mayor Coleman Young, as well as Governor William Milliken and former State Senator Sander Levin, who'll be a candidate for the Democratic gubernatorial nomination this fall.

Tannian announced plans for the constitutional amendment petition drive last month in Lansing, saying: "Many law-abiding but fearful people keep pistols in their homes for protection. But the facts are, as shown in federal studies, that pistols are rarely, if ever, useful in protecting private property and that, in the general majority of cases, they are the cause of injury to the owner or his family."

Young, however, immediately declared that the commissioner should not "trade" on his position to push the ban. The mayor advocated strict enforcement of existing gun control laws, not an outright ban on guns.

Milliken is calling for stiffer penalties for persons convicted of committing crimes while in possession of handguns.

"The damage has largely been done," the governor says. "Unregistered handguns are already in thousands of Michigan households. Our concern is how to minimize the potential danger of their criminal use."

Levin, meanwhile, rejects the proposed ban as unworkable. "Until people feel more secure in their homes and stores, even a constitutional provision would not end the widespread possession of pistols," he says. "Nor will simply ordering to pay the market value of a handgun persuade the person to turn in a weapon he believes is necessary to protect his family or his business."

State Police Director John R. Plant also opposes the proposed ban. He figures it would cost the state up to \$75 million to buy up all the small weapons, and he says it would "only make criminals out of law-abiding citizens who will not give up their guns."

And sitting on the same side of the fence is Republican Rep. Loren Anderson of Watergate, who

contends that Michigan now has one of the best handgun laws in the nation. "Properly and strictly enforced, our law would do the job that needs to be done," he said.

Anderson also suggests that the proposal to ban handguns would affect the entire state just as an effort to correct Detroit's problems.

### Shortage or Price Hike

The latest hike in milk prices really is a necessity. So says Glenn Lake, president of the Michigan Milk Producers Association, a milk marketing cooperative with some 5,600 members across the state.

Lake says the increase came with regrets.

"But consumers in Michigan and other states face shortages of milk unless dairy farmers are assured adequate incentive to continue dairy farming," he declares.

Lake contends that fewer and fewer people are willing to "make the necessary long-term commitments of time and money" to become or stay dairy farmers because of skyrocketing production

costs. And he pegs those costs today at some 51 percent more this year than two years ago.

"In Michigan last year, milk production was about 6 percent (or the equivalent of some 65 million half-gallons) below what it was in 1972," Lake says. "Michigan's milk production last year was the state's lowest since 1960, and there's no sign of a reversal in that trend in the near future."

### Protect American Workers

"Buy American" is the basis for a bill recently introduced in the Michigan House of Representatives.

Rep. Casmer Ogonowski, D-Detroit, wants all clothing advertised and sold in this state to be identified in which country it was made. He says such tagging would "protect American working men and women and protect the consumer."

"In these times of high unemployment, we have to do all that we can to preserve jobs in this country," Ogonowski says. And he adds, "while this legislature has the power to control imports, we can take steps to encourage the purchase of American-made products."

"Consumers are entitled to as much information as possible about the articles they may want to buy. I believe that great numbers of them would buy American-made goods instead of foreign products if they were advertised as such."

### MARCH SPECIALS:

**L & R RESTAURANT**  
(LITTLE ROOSTER RESTAURANT)  
Phone 426-8668 11485 N. Territorial Rd.  
THURSDAY, 5 to 9 p.m. - SPAGHETTI DINNER  
ALL YOU CAN EAT - \$2.00 per person

FRIDAY, 5 to 9 p.m. - OCEAN PERCH DINNER  
All the Perch You Can Eat - \$2.25 per person

In addition to our regular menu, we are now serving our own  
**HOME-MADE PIZZAS** after 5 p.m.

OPEN Tues., Wed., Thurs., 4 to 10 p.m., Fri., Sat., 11 a.m. to 10 p.m.  
Sun., 11 a.m. to 9 p.m. Closed Mondays.

## JUST REMINISCING

Items Taken from the Files of The Chelsea Standard

### 4 Years Ago...

Thursday, March 24, 1970—

M. W. (Mac) McClure was honored Monday night at the Kiwanis club weekly meeting as the only living charter member of the group, organized in 1924. He was presented with the Legion of Honor 45-year lapel pin and an honorary membership certificate by the only living member of the Ann Arbor Kiwanis club who helped charter the Chelsea club, V. O. Nelson.

Jim Wojcik was honored as most valuable basketball player, while Karsten Kargel and Dennis Brown were jointly named the most valuable wrestlers for the 1969-70 season, in presentations at the annual Winter Sports Banquet Tuesday evening at Chelsea High school.

At the monthly meeting of the Chelsea Community Chest last Wednesday, Thomas Dunlap was appointed to fill a vacancy on the Chest Board. The vacancy was created by the resignation of John Koch. In preparation for the 1970 campaign, budget chairman Mrs. Vivian Michelson and Mrs. Norma Popovich will begin meeting next month with organizations supported by the Community Chest.

Ron Herrst, Jerry Kuhl and Rod Powers of the Chelsea Future Farmers of America Chapter, have been named to receive the State Farmer Degree, which was conferred on them Wednesday at the University Auditorium at Michigan State University. The three were among Chelsea FFA members attending the 42nd annual state FFA convention.

### 14 Years Ago...

Thursday, March 31, 1960—

Clarinet quartet members from Chelsea High School who will play in the state festival Saturday, are Carol Cameron, Kathy White, Judy Grove, and Sharon Smyser. Kathy White will also participate in the clarinet solo division.

Old-time bathing suits dating as far back as 1910, were modeled by Mrs. Jack Wellnitz, Mrs. Paul Mann, Mrs. Robert Daniels, Mrs. Frederick Belser, and Mrs. George Kriegerbocker in Tuesday's Chelsea Child Study Club fashion show at Chelsea High school. Completing the scene, Mrs. William Rademacher appeared in an up-to-date bathing suit and matching beach jacket.

In the first session of a baby-sitter training course for 7th and 8th grade girls in Chelsea Junior high school and St. Mary's parochial school, Mrs. Robert J. Vanderkelen, president of the Jaycee Auxiliary, spoke as a representative mother, explaining what mothers expect of a babysitter.

### 24 Years Ago...

Thursday, March 30, 1950—

First-prize winners in the various age groups in a Stewardship essay and poster contest, held at St. Paul's church Sunday were Donna Osterle, Donna Hinderer, Eleanor Leland and Mrs. Floyd Walz. North Lake General Store, owned by Scott Freeman, was broken into

some time between 10 p.m. Thursday and 8 a.m. Friday; the thieves getting away with a great deal of merchandise, including fishing rods and reels, and a large quantity of canned goods, coffee, cigarettes, wine, and clothing.

Mrs. John Fischer, local chairman of the current Red Cross drive for funds, reported yesterday that Chelsea had already raised well over \$100 more than its \$1,250

quota, with one of the Chelsea plants and a number of block solicitors still to be heard from.

### 34 Years Ago...

Five Future Farmers of America receiving awards for outstanding projects in vocational agriculture at an achievement banquet sponsored by the evening agricultural class Tuesday night were Donald Cook, for the best senior project program; N. H. Miles, best junior project program; Roy Broesamle, best crops project; Gerald Heurion, best dairy project; and Loren Koenigster, best livestock project.

## CHelsea VILLAGE COUNCIL PROCEEDINGS

March 19, 1974

### Regular Session

This meeting was called to order at 7:30 p.m. by President Pennington. Present: President Pennington, Administrator Weber, Clerk Keezer, Trustees Present: Wood, Dmoch, Johnson, Borton, Galbraith, Others Present: Richard Harvey, Clark Bushnell, Eldon Gorton, Police Chief Metanuck, Art Lindauer, Jim Gaken, Luther Kusner, and Keith Boylan.

Minutes of the March 5 and March 14 meetings were read and approved.

Motion by Wood, supported by Johnson, to appoint Eldon Gorton to fill the unexpired term of trustee for one (1) year. Roll call: Yeas—Borton, Johnson, Dmoch, Galbraith, and Wood. Nays—none. Motion carried.

Discussion was held with Art Lindauer regarding the plans and specifications for the addition to the fire hall.

Motion by Wood, supported by Dmoch, to authorize Administrator Weber to accept bids for construction of the fire hall addition. Roll call: Yeas all. Motion carried.

A discussion was held on the Backwash Water Discharge at the water treatment plant.

Motion by Dmoch, supported by Gorton to accept Plan "A" of the proposal and to authorize the Village Administrator to accept bids on plans and specifications for said plan. Roll call: Yeas all. Motion carried.

Motion by Wood, supported by Borton, to authorize the Village President to sign in behalf of the village, the Tax System Agreement between the Village and Washtenaw County. Roll call: Yeas all. Motion carried.

A discussion was held regarding the Joe Hafner property, at 134 West Middle Street.

Motion by Johnson, supported by Borton, to purchase said property contingent on legal clarification from Village attorneys. Roll call: Yeas all. Motion carried.

Motion by Galbraith, supported by Dmoch, to adjourn. Roll call: Yeas all. Motion carried. Meeting adjourned.

Discussion was held on the 1974 Street Construction Program, particularly Freer Road.

Motion by Borton, supported by Gorton, to hold a public hearing on April 16, 1974 regarding construction of curb and gutter and sidewalk. Roll call: Yeas all. Motion carried.

A discussion was held regarding new agreements with the township which would allow township residents use of our landfill facilities. Various committee reports were given.

Motion by Dmoch, supported by Wood, to appoint Clark Bushnell to the Regional Planning Commission replacing Robert Schaeffer. Roll call: Yeas all. Motion carried.

Motion by Dmoch, supported by Johnson, to send five (5) representatives to Planning School at a cost of \$22.00 per person. Roll call: Yeas all. Motion carried.

Motion by Dmoch, supported by Borton, authorizing the Village Administrator to contact Penn Central regarding crossings at Main and McKinley Streets. Roll call: Yeas all. Motion carried.

Motion by Wood, supported by Johnson, to accept the Proposed Wage Schedule effective March 1, 1974. Roll call: Yeas all. Motion carried.

Motion by Dmoch, supported by Gorton, proclaiming March 31, 1974 thru April 6, 1974 the Week of the Young Child. Roll call: Yeas all. Motion carried.

Motion by Wood, supported by Galbraith, to adopt a resolution commending the Chelsea Kiwanis on the 50th Anniversary. Roll call: Yeas all. Motion carried.

Motion by Wood, supported by Johnson, to authorize payment of bills as submitted. Roll call: Yeas all. Motion carried.

Motion by Galbraith, supported by Dmoch, to adjourn. Roll call: Yeas all. Motion carried. Meeting adjourned.

Loren Keezer,  
Village Clerk.

## EXTRA GAS!

Custom installed fuel tanks for all makes of pickups, vans and motor homes.

26 to 50 gal. additional fuel tanks installed from \$155.

CALL FOR APPOINTMENT

**475-1347**

**LLOYD BRIDGES TRAVELAND**

M-52 and I-94 - Chelsea

## "Come and see our Expansion Program" INVERNESS INN

Your Innkeepers: Matt and Marge  
15996 North Territorial Rd. - North Lake

YOUR FAVORITE MEALS  
SHRIMP, CHICKEN & FISH DINNERS  
BEER - WINE - LIQUOR - PIZZAS  
LUNCHEON SPECIALS

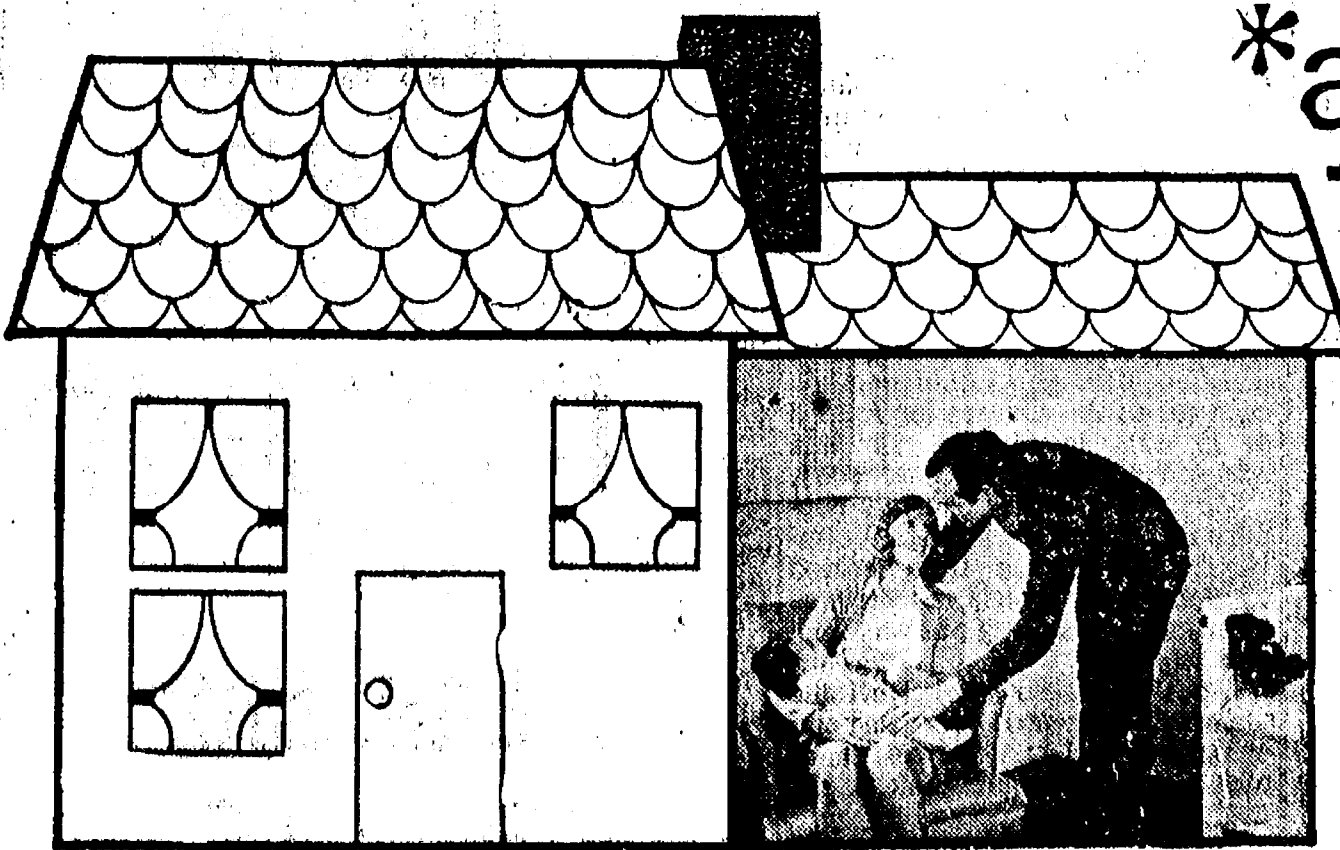
Established 1971 The Chelsea Standard Telephone 475-1371

Excellence Award By Michigan Press Association  
1961-1963-1966-1968-1969  
Walter P. Leonard, Editor and Publisher

Published every Thursday morning at 800 North Main Street, Chelsea, Mich. 48118, and second class postage paid at Chelsea, Mich., under the Act of March 3, 1970.

Subscription Rates (Payable in Advance)  
In Michigan: One Year \$4.00, Six Months \$2.50, Three Months \$1.50  
Outside Michigan: One Year \$6.00, Six Months \$3.50, Three Months \$2.00  
Single Copies 10¢  
Circulation 100-150, anywhere, 1 year \$6.00

NATIONAL ADVERTISING REPRESENTATIVE  
MICHIGAN NEWSPAPERS, INC.  
322 Michigan Ave.  
Ann Arbor, Mich. 48106



## \*a NEW ROOM for Thomas Matthew

Ann Arbor Federal Savings will help convert or add a room with a Home Improvement Loan. Your monthly payments can be set pretty much to meet your financial requirements. To decorate that nursery, you can borrow \$500.00 and take twelve months to repay, or if you need a larger amount, borrow up to \$5,000.00 and take up to sixty months to repay. There is no down payment and your home need not be paid for. Our Home Improvement Rates have dropped, so now is a good time to get started.

\*APPROX. COST FOR MATT'S NEW ROOM, \$39.75/PER MO. FOR 12 MOS.  
Based on a loan of \$446.00 for carpeting and decorating. Total payments equal \$477.00 (annual percentage rate 12.68%).

**ANN ARBOR FEDERAL SAVINGS**  
the savings and loan specialists

ANN ARBOR OFFICES: Downtown, Liberty at Division; Westside, Pauline at Stadium; Eastside, Huron Parkway at Platt; Northside, Plymouth at Nixon; CHELSEA - Main Street near Old U.S. 12; DEXTER - 9081 Main Street.  
Members: Federal Home Loan Bank System, a Federal Savings and Loan Insurance Corporation





CHEVITIFICATE, courtesy of Lloyd Bridges Chevrolet, was one of the door prizes awarded at the Washtenaw County Livestock Banquet at Saline High school last Saturday. Reuben Lesser here claims his prize to the amusement of Howard Heath, WPAG farm editor, who was master of ceremonies for the evening.



PFC. KATHY MILLIKEN and her husband, Pfc. Don Milliken, both of whom recently graduated from training at Fort Ord, Monterey, Calif., are on two-week leave in the Chelsea area, staying at the home of her sister and brother-in-law, Mr. and Mrs. Andrew F. Ford, 99 Cedar Lake.

Parts of 16 state parks and recreation areas, totaling 75,000 acres, are on two-week leave in the Chelsea area, staying at the home of her sister and brother-in-law, Mr. and Mrs. Andrew F. Ford, 99 Cedar Lake.

Parts of 16 state parks and recreation areas, totaling 75,000 acres, are on two-week leave in the Chelsea area, staying at the home of her sister and brother-in-law, Mr. and Mrs. Andrew F. Ford, 99 Cedar Lake.

Parts of 16 state parks and recreation areas, totaling 75,000 acres, are on two-week leave in the Chelsea area, staying at the home of her sister and brother-in-law, Mr. and Mrs. Andrew F. Ford, 99 Cedar Lake.

#### VACATIONS

A vacation is one-tenth playing and nine-tenths paying.

## POWER TILLERS

for

## HOME GARDENERS

A small deposit will hold your choice of Simplicity, Gilson, Arien's or PRO's Garden Master.

**Chelsea Hardware**

110 S. Main St.

Phone 475-1121

## NOTICE TO CHELSEA VILLAGE RESIDENTS

The 1974 tree planting program will be carried out during April.

Any village resident who wants a tree planted on his lawn extension should call 475-1771 before April 1, 1974.

**VILLAGE OF CHELSEA**

F. WEBER, ADMINISTRATOR

## Vietnam Vets Day Slated For Friday

In accordance with House Joint Resolution 885, passed Dec. 18, 1973, Chelsea's Village Council has proclaimed tomorrow, Friday, March 29, Vietnam Veterans Day.

The proclamation declares:

WHEREAS, There are more than 5 million young men and women who have served the United States of America with honor during the period of hostilities in Southeast Asia; and

WHEREAS, This group of Vietnam veterans now represents the second largest segment of our nation's population of wartime veterans; and

WHEREAS, The sacrifices offered by these gallant Americans has become a vital factor in the development of the capability of a war-weary people to sustain their right to self-determination; and

WHEREAS, The Vietnam veterans of our land have served the national purpose and returned quietly and modestly to civilian life without receiving the expressions of appreciation which they so richly deserve; and

WHEREAS, The Congress of the United States has passed and President Nixon has signed House Joint Resolution 885, calling for a special, one-time, one-day observance throughout the Nation to honor our Vietnam veterans; now

THEREFORE, I, A. E. Fuels, President of the Village of Chelsea, do hereby proclaim Friday, March 29, 1974, as "VIETNAM VETERANS DAY," and do call upon all citizens of Chelsea to observe the day with appropriate ceremonies and activities. I further call upon all business firms and households to display the flag of the United States in honor of the occasion and as a unified expression of our appreciation for their service.

IN WITNESS WHEREOF, I have hereunto set my hand and caused to be affixed the official seal of the Village of Chelsea, this 28th day of March, 1974.

Loren Kenner,  
Village Clerk

## SSI Alert Program Set For April 2

A meeting on the new Supplemental Security Income (SSI) has been scheduled for Tuesday, April 2 from 1 to 3 p.m. at the Korner House, W. Middle and S. Main St., according to Norman Wenk, area chairman for Chelsea. All low-income persons over 65 years old, relatives, or concerned friends are welcome to attend and learn more about this new benefit program.

Payment of the Supplemental Security Income is administered through Social Security. A single older person receiving less than \$180 a month, or a couple receiving less than \$260, may be eligible for some SSI.

Wenk urges people who feel they or a relative might be eligible for SSI to attend the meeting on April 2. Since representatives from the Social Security Administration and trained Red Cross volunteers will be on hand to explain the new program, present guidelines for eligibility, and help fill out the necessary application form.

To help determine eligibility, senior citizens should bring savings account statements, rent receipts, pension statements, car registration and insurance policies.

All persons receiving SSI will also be eligible for Medicaid, which covers prescription drugs and medical bills directly.

Interested persons who cannot attend the meeting or who want further information may call the SSI Alert office at the Red Cross headquarters in Ann Arbor, at 971-6085, or Ruth Chriswell at 475-2559.

People who need transportation to the meeting should call Ruth Chriswell.

#### NEW MOWER

Salesman to lady of the house: "Can I interest you in buying a lawn mower?" Lady: "No, but try next door. We use their lawn mower all the time and it's just terrible."

Telephone Your Club News  
To 475-1371



TOP AWARD WINNER: Matthew Villemure, a service employee at Palmer Ford in Chelsea, and his wife are congratulated by Elmer Priebe, Detroit district manager for Ford Customer Service Division. The dealership employee won Ford's top "customer satisfaction" incentive award for automotive service employees—a vacation-for-two in Spain. He is one of only 175 grand prize winners among 44,000 Ford and Lincoln-Mercury dealership service employees across the country. He and his family reside at 334 Washington St.

## James Gullet Charged with Auto Theft

A 17-year-old Chelsea native, presently absent without official leave from the U.S. Army since March 4, has been charged with possession of stolen goods, valued at more than \$100, Chelsea police report.

James C. Gullet pleaded not guilty to the charge, which involved a stolen car allegedly in his possession, and is currently being held on \$5,000 bond in Washtenaw County Jail.

Gullet's arrest was triggered by the report of a local man early Tuesday morning that a car had flattened a stop sign at the intersection of Wilkinson St. and Meadow Lane, and then fled.

The witness later returned to report that he had seen the same car in the vicinity of Beach Middle school. The witness described the driver as between 17 and 20 years of age, with short military-type haircut. License number of the automobile was reported as 1974 Illinois plate NX9500.

Upon running a LEIN check on the vehicle, Chelsea officers learned that it had been reported stolen from Donald Ravesloot of Harvey, Ill.

Roughly one hour after the sighting of the vehicle at Beach Middle school, a citizen tip was called in that stated that the car in question could be found at Inverness Inn. When officers Graves and McDougall arrived at the Inn, the vehicle was parked outside, unoccupied. The officers called the Washtenaw County Sheriff's Department to request an unmarked vehicle to stake out the tavern, but were informed that none was available.

They then contacted auxiliary officer Cal Summers, who met the pair with his own car. Officer Graves then removed his cap and shirt and proceeded to Inverness Inn in auxiliary officer Summers' car.

When they arrived outside the Inn, the officers saw a man, later identified as Colet Crayton, seated in the back seat of the vehicle. Officer Graves entered the tavern and observed Gullet, who soon left, he reported. Graves again exited the tavern and the officers ordered the three subjects out of the car—the third subject being Carl E. Gullet, the defendant's father.

The three were taken to the Chelsea Police Department, where Crayton and the elder Gullet were released on the grounds that they had no knowledge that the vehicle was stolen as police believed.

The owner of the vehicle was contacted and retrieved it last weekend. Value of the 1963 Chevrolet station wagon was appraised by Fred Klink of Lloyd Bridges Chevrolet at \$150.

**PIERSON & SONS**  
LICENSED GENERAL CONTRACTORS

475-8750

New Construction,  
Remodeling, Siding.

## IPSCO Plant Ransacked By Thieves

(Continued from page one)

Police believe that the maintenance man on duty at the plant frightened away the intruders.

Detective Kerr of the Washtenaw County Sheriff's Department has removed several sets of latent fingerprints from the cigarette machine, although police as yet have no suspects in the case.

I overheard one lady ask another lady if she had woke up grumpy that morning. The other lady replied: "No. He had a hangover, so I just let him sleep."

## PROCLAMATION

### The Week of the Young Child

Children who receive education in their first few years of life are found to come to primary school better prepared intellectually, emotionally, and socially for their next educational experience.

In recognition of this fact, the Huron Valley Association for the Education of Young Children, Washtenaw Community Coordinated Child Care Association and the National Association for the Education of Young Children are planning special observances from March 31, 1974-April 6, 1974, to focus public attention on such activities as preschool education, child care, and other resources available to young children.

These organizations will carry out a variety of projects devoted to publicizing the advantages of early education and other services for young children.

NOW, THEREFORE, I, Hal Pennington, Chelsea Village President, do hereby proclaim the period from March 31, 1974 to April 6, 1974 as The Week of the Young Child in Chelsea.

## MODERN MARBLE PRODUCTS

PHONE 475-1262  
526 N. MAIN CHELSEA, MICH.

## Home Improvement Sale!

FACTORY 1st and 2nd

CULTURED MARBLE VANITIES

Good color selection on all 25- and 31-inch tops.

**40% to 60% SAVINGS**

ONE WEEK ONLY

Friday, March 23 thru Saturday, March 30

Open Saturday, March 23 & 30, 9 a.m. to 3:30 p.m.

CASH & CARRY

Builders and Contractors Welcomed

KLEEN-MAID  
**BREAD**  
29¢  
1 1/2 Lb. Loaf

RISDON'S  
LO-FAT 1%

**MILK**  
98¢ gal.

LAND O' LAKES  
SWEET CREAM  
**BUTTER**  
79¢ lb.

ALL BRANDS & SIZES - CHECK OUR PRICES ANYWHERE

**CIGARETTES** . . . \$3<sup>37</sup>  
Your Choice Per Carton

BUNNY POP  
**POPCORN**  
2-Lb. Bag 19¢

It's the Real Thing  
**COCA-COLA**  
1-Pt., 16-Oz. No-Return Bottles  
8 pac 98¢

MEADOWDALE  
**CORN CURLS**  
1-Lb. Bag 39¢

U. S. GRADE A WHITE

**FRESH EGGS** . . . Large Size Doz. 59¢

MEADOWDALE  
**BACON**  
1-Lb. Pkg. Sliced 98¢

HOMEMADE  
**Pork Sausage**  
1-Lb. Bulk 98¢

FARMER PEET'S  
**ROLLED HAM**  
Boneless Lb. \$1<sup>29</sup>

U.S.D.A. CHOICE BEEF

**ROUNDSTEAK** Full Cut Lb. \$1<sup>29</sup>

GOLDEN YELLOW  
**BANANAS**  
2 lbs. 29¢

EARLY PLANTING  
**ONION SETS**  
69¢ lb.

CALIFORNIA  
**Head Lettuce**  
29¢ Head

BEER - WINE  
LIQUOR

Phone  
475-1701

**JIFFY MARKET**

CHELSEA  
TOP VALUE STAMPS

Open 7 a.m.-10 p.m.  
7 Days A Week

Sale Prices Effective  
Thursday, Mar. 28  
thru Sun., Mar. 31



## + Services in Our Churches +

**ST. PAUL UNITED CHURCH OF CHRIST**  
The Rev. John Rinehart, Interim Pastor  
Thursday, March 28—  
1:30 p.m.—Prayer group.  
Friday, March 29—  
Confirmation class field trip to Synagogue in Ann Arbor.  
8:00 p.m.—Tougaloo College Choir concert, at Memorial Christian Church in Ann Arbor.  
Saturday, March 30—  
No confirmation.  
8:00-7:30 p.m.—Spaghetti supper at Bethel United Church of Christ in Manchester for Spaulding for Children. Reservations necessary.  
Sunday, March 31—  
9:00 a.m.—Church school.  
10:30 a.m.—Worship service.  
Courtesy articles due.  
Monday, April 1—  
8:00 p.m.—Board of Christian Education.  
Tuesday, April 2—  
7:30 p.m.—Women's Fellowship Board.  
Wednesday, April 3—  
1:00 p.m.—Mission club.  
3:30 p.m.—Junior choir.  
6:30 p.m.—Courier Mailing Committee.  
8:15 p.m.—High school and chancel choir.

**ST. MARY CATHOLIC CHURCH**  
The Rev. Fr. David Philip Dupuis, Pastor  
Mass Schedule  
Every Saturday—  
4:00-5:00 p.m.—Confessions.  
7:00 p.m.—Mass.  
Immediately after 7 p.m. Mass—Confession.  
Every Sunday—  
Winter schedule  
8:00, 10:00, 12:00 noon.—Mass.  
Summer schedule  
7:00, 9:00, 11:00 a.m.—Mass.

**ST. BARNABAS EPISCOPAL CHURCH**  
2055 Old US-12  
The Rev. C. Walton Fitch, Vicar  
Telephone 426-8815  
Every Sunday—  
9:15 a.m.—Holy communion, first, third, and fifth Sundays.  
9:15 a.m.—Morning Prayer, second and fourth Sundays.  
9:30 a.m.—Sunday school.  
10:15 a.m.—Choir rehearsal.

**FIRST ASSEMBLY OF GOD**  
The Rev. Thode B. Thodeson, Pastor  
Every Sunday—  
9:45 a.m.—Sunday school.  
11:00 a.m.—Worship service.  
6:00 p.m.—Youth Service.  
7:00 p.m.—Evangelistic service.  
Every Wednesday—  
10:00 a.m.—Ladies Bible Study.  
7:00 p.m.—Midweek services.

**FIRST UNITED PRESBYTERIAN CHURCH**  
Unadilla  
The Rev. T. H. Liang  
Every Sunday—  
9:45 a.m.—Sunday school.  
11:00 a.m.—Worship service.

**CHELSEA BAPTIST CHURCH**  
337 Wilkinson  
The Rev. James Stacey, Pastor  
Every Sunday—  
9:45 a.m.—Sunday school.  
11:00 a.m.—Worship service.  
Nursery care available during all services.  
6:00 p.m.—Junior and Senior Baptist Youth Fellowship.  
7:30 p.m.—Evening service.  
Every Wednesday—  
7:30 p.m.—Bible study and prayer meeting.

**VILLAGE UNITED METHODIST CHURCH OF WATERLOO**  
8118 Washington St.  
The Rev. Altha Barnes, Pastor  
Every Sunday—  
10:00 a.m.—Sunday school.

**1000 personal address labels \$1.50**  
Available at  
**The Chelsea Standard**

**FIRST UNITED METHODIST CHURCH**  
The Rev. Olive Dickins, Pastor  
Thursday, March 28—  
8:00 p.m.—Administrative Board in the Educational Unit.  
Saturday, March 30—  
10:00 a.m.—Cherub choir.  
10:30 a.m.—Junior choir.  
Sunday, March 31—  
9:00 a.m.—Church school nursery through adult.  
10:00 a.m.—Worship service.  
5:30 p.m.—Junior and senior high UMYF "Splash Party" at the Y.  
Wednesday, April 3—  
8:15 p.m.—Pot-luck.  
7:00 p.m.—Program.  
8:00 p.m.—Activities.  
Thursday, April 4—  
7:30 p.m.—Board of Trustees in the Litteral Room.  
7:30 p.m.—United Methodist Women executive committee in the Educational Unit.

**ST. THOMAS EVANGELICAL LUTHERAN**  
Ellsworth and Haab Rds.  
The Rev. Daniel L. Mattson, Pastor  
ST. THOMAS EVANGELICAL  
Sunday, March 31—  
9:45 a.m.—Sunday school and Bible class.  
11:00 a.m.—Worship service.  
IMMANUEL BIBLE CHURCH  
145 E. Summit St.  
The Rev. LeRoy Johnson, Pastor  
Every Sunday—  
9:45 a.m.—Sunday school, nursery provided.  
11:00 a.m.—Morning worship, nursery provided.  
7:30 p.m.—Family hour, prayer meeting and Bible study.  
First Sunday of Month—  
7:00 p.m.—Communion service.  
10:00 a.m.—Sunday school.

**NORTH SHARON BIBLE CHURCH**  
Sylvan and Washburne Rds.  
The Rev. William Enslen, Pastor  
Every Sunday—  
10:00 a.m.—Sunday school.  
(Nursery will be available.) Junior church classes.  
11:00 a.m.—Worship service.  
6:00 p.m.—Senior High Youth meeting, Youth Choir.  
7:00 p.m.—Evening worship services. (Nursery available.)  
Every Wednesday—  
7:00 p.m.—Bible study and prayer meeting. (Nursery available.)  
Bus transportation available: 428-7222.

**ST. JOHN'S EVANGELICAL AND REFORMED CHURCH**  
(United Church of Christ)  
Francisco  
The Rev. J. P. Goebel, Pastor  
Every Sunday—  
9:30 a.m.—Sunday school until 10:30 a.m. Confirmation classes, seventh graders and up, Children's Choir Practice. Adult Bible Study.  
10:30 a.m.—Worship service until 11:30 a.m. Nursery available for pre-schoolers during worship service.

**CHURCH OF CHRIST**  
1340 Old US-12, East  
David A. Rushlow  
Every Sunday—  
10:00 a.m.—Church school.  
11:00 a.m.—Worship service.  
Nursery will be available.  
6:00 p.m.—Worship service.  
Every Wednesday—  
7:30 p.m.—Bible Study.

**BAHA' FIRESE**  
Every Thursday—  
8:00 p.m.—At the home of Toby Peterson, 705 S. Main St. Anyone wishing to learn about the Baha' faith is welcome.

**NORTH LAKE UNITED METHODIST CHURCH**  
The Rev. J. William Todd, Pastor  
Every Sunday—  
9:45 a.m.—Worship service.  
11:00 a.m.—Sunday school. Nursery available.  
Every Wednesday—  
4:00 p.m.—Children's Choir.  
7:00 p.m.—Adult Choir.

**BETHEL EVANGELICAL AND REFORMED CHURCH**  
(United Church of Christ)  
Freedom Township  
The Rev. Roman A. Reineck  
Every Sunday—  
10:00 a.m.—Worship.

**CONGREGATIONAL CHURCH**  
(United Church of Christ)  
The Rev. Carl Schwarm, Pastor  
Sunday, March 31—  
10:00 a.m.—Sunday school.  
11:00 a.m.—Worship service.  
Commentary articles due.  
Wednesday, April 3—  
7:30 p.m.—Lenten service.

**ZION LUTHERAN CHURCH**  
Corner of Fletcher, Waters Rds. (Rogers Corners)  
The Rev. John R. Morris, Pastor  
Thursday, March 28—  
4:00 p.m.—Eighth grade youth instruction.  
Saturday, March 30—  
9:00 a.m.—Ninth grade youth instruction.  
10:00 a.m.—Seventh grade youth instruction.  
Sunday, March 31—  
9:00 a.m.—Sunday school.  
10:15 a.m.—Worship service.  
Wednesday, April 3—  
8:30 p.m.—Junior choir; senior choir following.  
7:30 p.m.—Lenten devotional.  
Thursday, April 4—  
4:00 p.m.—Eighth grade youth instruction.

**OUR SAVIOR LUTHERAN CHURCH**  
The Rev. William H. Keller, Pastor  
1515 S. Main, Chelsea  
Each Sunday—  
9:00 a.m.—Sunday school.  
9:00 a.m.—Adult Bible class.  
10:30 a.m.—Worship service.

**GREGORY BAPTIST CHURCH**  
The Rev. Grant Lapham, Pastor  
Every Sunday—  
10:00 a.m.—Worship.  
10:00 a.m.—Sunday school.  
7:30 p.m.—Evening worship service.

**WATERLOO FIRST UNITED METHODIST**  
Parks and Territorial Rds.  
The Rev. Altha Barnes, Pastor  
Every Sunday—  
9:15 a.m.—Morning worship.

**ST. JACOB EVANGELICAL LUTHERAN CHURCH**  
12501 Rietmiller Rd., Grass Lake  
The Rev. Andrew Bloom, Pastor  
Every Sunday—  
9:00 a.m.—Worship service.  
10:15 a.m.—Divine services.

**SALEM GROVE UNITED METHODIST CHURCH**  
3320 Notten Rd.  
The Rev. J. William Todd, Pastor  
Every Sunday—  
10:00 a.m.—Sunday school.  
11:00 a.m.—Worship service.

**ST. JOHN'S (UNITED CHURCH OF CHRIST)**  
Rogers Corners  
The Rev. Richard Campbell, Pastor  
Every Sunday—  
9:30 a.m.—Sunday school.  
10:30 a.m.—Worship service.

**FIRST CHURCH OF CHRIST, SCIENTIST**  
1683 Washtenaw Ave., Ann Arbor  
Every Sunday—  
10:30 a.m.—Sunday school; morning service.

**METHODIST HOME CHAPEL**  
The Rev. R. L. Clemans, Pastor  
Every Sunday—  
8:45 a.m.—Worship service.

**CHELSEA MEDICAL CENTER**  
Every Other Wednesday—  
1:30 p.m.—Worship service.

**Future of Huron River Will Be Discussed**

The future of the Huron River and the role of the Michigan Natural Rivers program will be the topic of discussion at a public meeting on Wednesday, April 3, 7:30 p.m. in the Hamburg Fire House, 7252 Stone, Hamburg. Huron River Watershed Council and Department of Natural Resources representatives will present a slide presentation and a question and answer session. The public is invited.

My kids were invited to this wild birthday party for the little boy across the street. His mother was clever, though. She gave out special prizes to the kids who went home first.



BIDDY BASKETBALL PISTONS are, front row, from left, Pat Powers, Greg Ackley, and Strat Rademacher. In back, from left, are Shawn Christensen, Dan Alber, Mike Wood, and James Pickens. Behind the squad is coach Larry Christensen. Not present for photo were Steve Kvarnberg, Andy Bonus, and Shawn Pierson.

## ★ District Court Proceedings ★

### Week of March 19-26

Raymond Dennis pled guilty to driving with expired license plates. The charge was dismissed on \$6 costs.

Edward Lipier was charged with driving without valid registration. The charge was dismissed on \$6 costs.

Jack A. Elsfior pled guilty to speeding and was fined \$25.

William Dunston pled guilty to a reduced charge of impaired driving and will be sentenced May 1.

Thomas Sullivan was charged with failure to maintain equipment. The charge was dismissed on \$6 costs.

Timothy Wade pled guilty to careless driving and was fined \$34.

Steven Lewis pled guilty to speeding and was fined \$33.

John Simenck pled guilty to speeding and was fined \$27.

Johnny Simpson was brought in on a bench warrant for executing an improper U-turn and was fined \$26.

Joan Simchek pled guilty to speeding and was fined \$31.

John Hatz pled guilty to speeding and was fined \$23.

Charles Ball pled guilty to a reduced charge of impaired driving and will be sentenced May 3.

Clark Davis pled guilty to speeding and was fined \$25.

William Kinney pled guilty to driving left of center and was fined \$31. He pled guilty to speeding and was fined \$40. He pled guilty to driving without an operator's permit and was fined \$75 and sentenced to 10 days on the Ypsilanti work program.

Jan Yeater pled guilty to careless driving and was fined \$30.

James P. Donnelly and Richard D. Muks pled no contest to a reduced charge of indecent exposure and will be sentenced May 1.

Douglas Boorty pled guilty to violation of his license restrictions and was fined \$25.

Lonnie Weed pled guilty to speeding and was fined \$37.

Mary Jane Callison was fined \$100 for larceny with a value of less than \$100.

Julie Frolz pled guilty to speeding and was fined \$47.

Melville Jones pled guilty to speeding and was fined \$25.

Frank Pope was fined \$250 and instructed to participate in the Alcohol Safety Program for impaired driving.

Thurman Greene pled guilty to speeding and was fined \$27.

Nicholas Vratovic pled no contest to speeding and was fined \$37.

Paul Cazon pled guilty to driving without an operator's permit on his person and was fined \$21.

Barry Conn waived examination on a charge of receiving and concealing stolen property and was bound over to circuit court for examination on April 5.

Cynthia Karalia waived examination on a charge of receiving and concealing stolen property and was bound over to circuit court for examination on April 5.

Peggy Moore pled guilty to driving without an operator's permit on her person and was given a 10-day suspended sentence.

William Scott pled guilty to careless driving and was fined \$34.

Charles Burton changed his plea to nolo contendere to a charge of impaired driving and was fined \$250, instructed to participate in the Alcohol Safety Program and placed on probation.

Charles Burton pled guilty to driving without registration or proof of insurance and was fined \$28. He pled guilty to driving on the wrong side of the roadway and was fined \$26.

Richard Davison was charged with driving without an operator's permit on his person. The charge was dismissed on \$6 costs.

Oren Laurence pled guilty to driving a mini-bike without an operator's permit and was fined \$25 and sentenced to five days on the Dexter work program.

David Stewart was found guilty of a charge of drunk and disorderly and was fined \$50.

Sharon Boudie did not appear and a bench warrant was issued.

Sharon Boudie did not appear and a bench warrant was issued.

Sharon Boudie did not appear and a bench warrant was issued.

Sharon Boudie did not appear and a bench warrant was issued.

Sharon Boudie did not appear and a bench warrant was issued.

Sharon Boudie did not appear and a bench warrant was issued.

Sharon Boudie did not appear and a bench warrant was issued.

Sharon Boudie did not appear and a bench warrant was issued.

Sharon Boudie did not appear and a bench warrant was issued.

Sharon Boudie did not appear and a bench warrant was issued.

Sharon Boudie did not appear and a bench warrant was issued.

Sharon Boudie did not appear and a bench warrant was issued.

Sharon Boudie did not appear and a bench warrant was issued.

Sharon Boudie did not appear and a bench warrant was issued.

Sharon Boudie did not appear and a bench warrant was issued.

Sharon Boudie did not appear and a bench warrant was issued.

Sharon Boudie did not appear and a bench warrant was issued.

Sharon Boudie did not appear and a bench warrant was issued.

Sharon Boudie did not appear and a bench warrant was issued.

Sharon Boudie did not appear and a bench warrant was issued.

Sharon Boudie did not appear and a bench warrant was issued.

Sharon Boudie did not appear and a bench warrant was issued.

Sharon Boudie did not appear and a bench warrant was issued.

**PEANUTS FOR CANDY**  
Spanish, Runner and Virginia type peanuts are used for candy. The largest use of shelled peanuts in candy is in the manufacture of nut rolls, and peanut bars. Other candy confections include chocolate bars, chocolate-covered peanuts, peanut brittle, and peanut chews.  
It's a difficult task to convince some people that a bargain still costs money!



Thinking of selling your property? Real estate problems are my business. Let's talk. Call me personally.

**Real Estate Services**  
OF WASHTENAW  
REALTOR  
EVE, 475-1449 1196 M-52, Chelsea 475-6692

**HAMILTON REFRIGERATION & AIR CONDITIONING SERVICE**  
MANCHESTER  
**COMMERCIAL SYSTEMS Installation and Repair**  
CALL GARY HAMILTON - 428-7600  
NIGHTS 428-8232

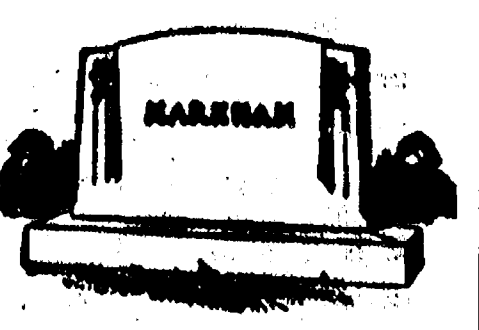
**FARMERS' SUPPLY CO.**  
PHONE 475-1777

**FEEDS**  
Faster gains from better  
Calves get growing and gaining faster, on our balanced, fortified Calf Feed... enriched with needed vitamins, minerals.

Complete feeding rations for all your livestock, poultry.

## Studded Snow Tires Must Come Off By April 1

Michigan State Police are reminding motorists that Monday, April 1, is the cut-off date for seasonal use of motor vehicle tires equipped with studs or ice grips. Col. John R. Plants, department director, emphasizes that this deadline on studded tire use is a month earlier than it was under the previous regulation concerning it. Plants said his department will begin enforcement of the studded tire ban at 12:01 a.m., Tuesday, April 2. The current Michigan law on studded tires provides for their use again in the winter of 1974-75. After that time any use of such type of tire will be governed by regulations which the State Highway Department has been authorized to promulgate.



MAUSOLEUMS ★ MONUMENTS  
BRONZE TABLETS ★ MARKERS

**BECKER MEMORIALS**  
6033 Jackson Road  
ANN ARBOR, MICHIGAN

## "LET THE BIBLE SPEAK"

YOU CAN BE A CHRISTIAN WITHOUT EVER JOINING ANY DENOMINATION. Do you know that you can be a Christian, a member of the church of the Lord forgiven of your sins, and assured of the promise of eternal life—all without ever joining any denomination, being bound by any human creed, or submitting to any final human authority in religion? Not only CAN you be, the Lord WANTS you to be!

Throughout the world, many people are studying their New Testaments with the thrilling awareness that the way to Christ and the salvation He offers is clearly revealed. These people are learning that the Word of God is the "SEED" of the kingdom. (Luke 8:11), and that just as the seed produced Christians when sown and received into "HONEST AND GOOD" hearts in the first century, so it will produce Christians in the 20th century.

When people hear the gospel, (Romans 10:14) believe the gospel (Mark 16:15-16) repent of their sins, (Acts 2:38) confess Christ (Romans 10:10) and are Baptized, for the remission of sins, (Acts 2:38, Romans 6:3-4 Acts 22:16) the Lord then "ADDS" them to HIS CHURCH, (Acts 2:47) (Ephesians 1:22-23) (Ephesians 5:28) These "NEW CREATURES" are called Christians (Acts 11:26) (I Peter 4:16) In all of their work and worship they are guided by the word of the Lord as revealed in the New Testament. (II Timothy 3:16-17)

This message is presented by a congregation of just such people as you have been reading about. They have obeyed from the heart the "FORM OF DOCTRINE BEING DELIVERED" in the New Testament (Romans 6:17), and they have the Lord's promise that He has added them to HIS CHURCH. They have joined no denomination, subscribed to no human creed, recognized no human authority as final in religion. They, along with millions of others are pleading for the restoration of New Testament Christianity, to be believed, obeyed, and taught, today exactly as it was in the first century when Christ Built His Church, and added the baptized believers to it on the Day of Pentecost A.D. 33. (Acts 2:38, 47).

These people urge you to study, learn and obey the gospel of Christ as revealed in the New Testament, and not the doctrines and commandments of men taught in denominations. Call this number TODAY for a FREE HOME-VIDEO Bible study, 475-9468, and see and hear for yourself "WHAT THE BIBLE SAYS."

Offered for your prayerful consideration by the  
**Chelsea Church of Christ - 13661 Old US-12, Chelsea, Mich. 48118**  
David A. Rushlow (Minister)

**OIL**  
**GAS**  
**COAL**

**Higher fuel costs are pushing up the price of electricity.**

**Detroit Edison**

We produce most of our electricity by burning coal. The cost of coal is going up rapidly. Oil and natural gas are even more expensive. And they are in critically short supply. Almost 1/3 of our electric revenue is used to pay our fuel bill. So the rising cost of fuel is one more reason why the price of electricity is going up. You can't take electricity for granted anymore, but we'll continue to do our best to provide reliable electric service now and in the future.



## Letters to the Editor

Dear Editor:

I'd like to take this occasion to extend a hearty thank-you to the Chelsea Medical Clinic and especially Dr. Jerry Wadkyk, and his nurse, I am the high school special education teacher and they came to my aid with two physical examinations for all 13 of my students. These were desperately needed if these children were to be able to compete in the Special Olympics on May 4 in Milan. It took a great deal of time and effort on his part and my students and I are ever so grateful.

We would also like to thank Mrs. Gladys Buck, a mother of one of my students. She, in spite of illness, has helped us in countless ways—teaching, sewing, driving us everywhere and anywhere, organizing, writing recipes, telephoning, and giving moral support to all of us.

I have taught and lived in the school district for five years and the community feeling I have felt makes me want to stay another 20. Thanks again to the Clinic, Dr. Wadkyk, his nurse, and Mrs. Buck.

Nancy Oswald and class,  
Chelsea High School.

To the Editor:

As far as I'm concerned, the Huron-Clinton Metropolitan Authority can slice off the rest of the 3,400 acres they plan to flood now for the Mill Creek Park. With the energy crisis, who will drive from Detroit to Chelsea, almost 50 miles, to enjoy a flooded plain? Also, it just doesn't seem right that so many people have to move out just to have the area flooded. Think of the wildlife that will either be drowned or driven out of the area, which is their home in the first place. Why build a home for wildlife when there won't be any around? Come on, not-so-dumb people, let's see if we can't stop this outrage.

Anthony Willan.

Dear Editor:

While attending a party and upon hearing a terrible crash, it was with a feeling of shock and revulsion that I ran from the house to the curve on Old U.S.-12 last Saturday evening (March 16). My feelings were amplified when I came to the first demolished car. Upon looking in, I saw the young man unconscious, draped over the front and back seats of the car, the lower part of his body at a grotesque angle to the upper, and a crazily perched open beer can resting on his crumpled body. I saw two occupants of the other car, pinned in the smashed vehicle. Their heads had hit the windshield, the front seat and the dash of the car, pinned in the smashed vehicle, the front seat and the dash of the car were compressed together.

**LOSE UGLY FAT OR PAY NOTHING**

Start losing weight today. OR MONEY BACK. MONADEX is a tiny tablet that will help curb your desire for excess food. Eat less—weigh less. Contains no dangerous drugs and will not make you nervous. No strenuous exercise. Change your life... start today. MONADEX costs \$3.00 for a 20-day supply and \$5.00 for twice the amount. Lose ugly fat or your money will be refunded with no questions asked. **CHELSEA DRUG STORE**  
Chelsea - Mail Orders Filled

When trying to sort out my feelings in the aftermath the overriding question comes to the fore. How long before our society puts an end to these needless tragedies?

The answer is not easy, nor is it forthcoming, but a few observations are possible.

(1) As long as prosecutors and judges are willing to plea bargain in cases where drivers have been charged with driving while intoxicated.

(2) As long as our society considers driving a right rather than a privilege.

(3) As long as our society considers the plight of the drunk as humorous rather than tragic, or that drinking to the point of intoxication is somehow funny. (No one at the scene of the accident was laughing.)

(4) As long as the rest of us are willing to pay and pay again, in higher insurance rates, higher taxes, and occasionally our time, our property, our blood, or our life.

As long as the reality is exemplified by people of all ages who think that they have a right to drink and then drive, we will have senseless tragedies like the one last Saturday (March 16).

Sincerely,  
Max Plank.

Dear Editor:

Gun control seems to be the only solution to our nation's rising homicide rate. The small snub-nosed revolver, the "Saturday night special," is the gun the average American urbanite has in his home. These guns should be outlawed. People may raise the question, "How am I to be protected at home?" But what of your children's safety? If people weren't allowed to have these guns, the criminal would be out of business, there would be less gun accidents in the home, and fewer murders committed in "the heat of the moment." These little jewels have only one purpose—to kill people—and so far they have been very successful.

Pete Feeney.

To the Editor:

With pride I write this letter regarding the recently completed 10-week Biddy Basketball Program for boys aged 7-12 years.

My two sons participated in this program along with more than 100 other boys and I was very impressed with the competency and fairness of the directors and coaches who gave their valuable Saturday afternoons to guide the young cagers in good basketball fundamentals. Bill Ackley, Jon Schaffner, and Pat Wade as directors did an excellent job overseeing the entire program. Coaches Phil Bareis, Paul Bunton, Bill Clifton, Larry Christensen, Jim Sprague, Jim Ticknor and John Yelsik treated the boys impartially, making each one feel successful and important to the team and to themselves. These are good coaching qualities that make youngsters desire to continue competing in their chosen sport.

Mrs. Marian Sprague

ADVICE?

Whenever you find yourself in deep water, it's a good idea to keep your mouth shut.



AMONG JACKSON COUNTY 4-H leaders who recently attended the State 4-H Leadership Conference at Michigan State University were Gary Roderick (back row, second from right) and Mrs. Roderick (front row, far right) of Grass Lake. Others pictured are, front row, from left, Mrs. Lyle Crites, and Mrs. Phyllis Campbell; back row, from left, Lyle Crites, Mrs. Ed Dunlap, and Frank Root.

## Volunteers Attend Leadermete

"Follow the 4-H Road" was the theme of the 18th annual state 4-H Leadermete conference held at Michigan State University March 9 and 10 that attracted more than 350 Michigan 4-H volunteer leaders. One of the highlights of the 4-H year, Leadermete recognizes outstanding county volunteer leaders and provides opportunities for idea exchanges and inspirational training. Those attending were selected by their counties.

Attending from the Chelsea area were Mr. and Mrs. Gary Roderick of 9508 Beeman Rd., Grass Lake.

Discussion groups on the future of 4-H, campus tours, an idea fair, special interest workshops, banquets, visits with foreign students and presentation of awards to veteran volunteer leaders and support groups were among the conference activities.

The annual conference is presented by the State 4-H youth council and sponsored by the Michigan 4-H Foundation.

## Junior Swingers Standings as of March 9

Rod's II	W	L
Pin Smokers	69	43
Superstars	68	44
The Good Guys	67	45
The Alley Cats	65	47
The Freaks	64	48
Y.B.A. Scorers	55	57
Hush Puppies	53	59
Team 10	51	61
The Swingers	47 1/2	65 1/2

Girls games 120 and over: C. Miller, 138; B. Roy, 131, 132; D. Roy, 142, 123; T. Thomas, 124; D. Craft, 144, 139; K. Milliken, 139, 130; D. Packard, 144, 129; C. Collins, 133, 137; M. Fahrner, 138, 179; S. Schulze, 126, 123; B. Lovely, 138, 139, 122; K. Tobin, 153, 127.

Girls, series 350 and over: C. Miller, 353; B. Roy, 375; D. Roy, 369; D. Craft, 402; K. Milliken, 139, 130; D. Packard, 144, 129; C. Collins, 370; M. Fahrner, 426; B. Lovely, 389; K. Tobin, 366.

Boys, games 150 and over: J. Collins, 184, 159; J. Boyer, 153, 216; M. Cook, 156; C. Sannes, 179, 155; B. McGibney, 158, 168; D. Craft, 200, 180; M. Burnett, 181, 201; M. Sweezy, 155; D. Torrice, 182; T. Marsh, 178, 152; S. Lyeria, 159, 159; M. Foster, 165, 206; D. Messner, 183; D. Alber, 211, 175; D. Thompson, 174; J. Sweet, 164; J. Bulick, 172; M. Schnaidt, 165; R. Weiner, 182, 164, 169.

Boys, series 440 and over: J. Collins, 478; J. Boyer, 518; C. Sannes, 481; B. McGibney, 475; D. Craft, 496; M. Burnett, 508; T. Marsh, 483; S. Lyeria, 454; M. Foster, 419; D. Messner, 456; D. Alber, 508; R. Weiner, 514.



DEN 15, PACK 435

Den 15 of Pack 435 met Wednesday, March 20 at the Spencers' house at 6:45 p.m. We started out and then came Eric Myers, just in time! We went to Mr. Whitney's house to see his rock collection. It was interesting. He gave us some rocks to bring home.

Tom Spencer, scribe

**PIERSON & SONS**  
LICENSED GENERAL CONTRACTORS  
475-8750

New Construction,  
Remodeling, Siding.

## St. Louis School Notes

At the school's St. Patrick's Day party, Mrs. Robbins was honored when the fathers, sisters, and the boys presented her with a plant, the teachers with a pot of shamrocks, and Father Fortunato and the younger boys, with an Irish pin. The menu for the day was all green, and everyone wore shamrocks. Father Umberto and the boys played the band in honor of the occasion. Pat O'Brian and Mrs. Robbins gave a presentation in class about Ireland.

A medical student who the boys call "Uncle Jeb," who teaches dance at a studio at Southland, brought 70 girls from his dance studio for a social and dance with the boys.

Sunday a group of girls from Chelsea came out for a social and played basketball and volleyball.

This week the boys and staff are anticipating a visit from Mother Rose from the mother house of the St. Louis school sisters in Como, Italy. She will spend several days at the school.

## Newspaper Vending Machine Vandalized

Approximately \$25 to \$30 in change was stolen from a Detroit Free Press stand coin box stationed in front of the Gallup-Silkworth Pump & Pantry at 288 S. Main St., sometime before 7:45 a.m. Saturday.

Ron Bush, manager of the station, discovered upon his arrival that the newstand was missing. He found it on the north side of the building near the ice machine, emptied of its change. Chelsea Police have no suspects in the case.



## DISCONTINUED COLORS

Dutch Boy has discontinued several colors of flat wall paint, satin and gloss enamel and house paint. Many of them are attractive colors.

Reduced from \$4.95  
\$9.98 gal. to

Quarts Reduced from \$3.35 to \$1.39

**MERKEL**  
HOME FURNISHINGS

# RICK'S MARKET

The Little Store That Wants To Do Big Things!

20490 M-52 North

PHONE 475-2898

## SHURFINE SPECIAL

GREEN BEANS, French style, 15 1/2-oz. can  
Whole Kernel Golden SWEET CORN, 17-oz. can  
PEAS & CARROTS, 17-oz. can  
EARLY HARVEST SWEET PEAS, 12-oz. can

4 for \$1

OVEN FRESH

## WHITE BREAD

3 1 1/4-lb. loaves \$1

MORTON

## WATER SOFTENER PELLETS

80-Lb. \$2.45 Bag  
40-Lb. \$1.43 Bag

BORDEN'S HOMOGENIZED

MILK . . gal. \$1.29

## Fresh Donuts & Delicious Bar-B-Q Ribs & Chicken Daily

## FRESH BAKED BREAD ON WEEK-ENDS!

Our Specials Are Good for the Whole Week - Thurs., Mar. 28 to Wed., April 3  
NOT JUST 4 DAYS!

## NUT TOP ROLLS

Pkg. of 8 49¢

RED TAG SPECIAL!

## KEEBLER COOKIES

2 pkgs. 98¢

FAMILY SIZE

## TIDE

10-Lb., 11-Oz. Box \$3.19

## PURINA DOG CHOW

50-Lb. Bag \$8.19

## How Are Your Shocks?

**APRIL FREE INSTALLATION SPECIAL**

With the purchase of any 4 Monroe shock absorbers, we will install them

**FREE OF CHARGE**

Call Now for An Estimate!

## TOWER SHELL

475-2691

# VIETNAM VETERANS DAY FRIDAY, MAR. 29

The Chelsea American Legion Post No. 31 and Veterans of Foreign Wars Post No. 4076 salute these courageous men and ask the people of Chelsea to fly their flag in appreciation of their noble efforts.







### Club and Social Activities

**PHOEBE CIRCLE**  
Phoebe Circle of the United Methodist church met at the home of M.A. Lyman Smith on Wednesday, March 20 at 1 p.m.  
Mrs. Raymond Schairer presented an Easter program, using material from the Michigan Christian Advocate. There will be a follow-up of the program when the group next meets on April 17 at the home of Mrs. James Gaunt.  
Funds were collected to be sent to the Heart and Home Mission in Philippi, W. Va.  
The meeting was closed with the singing of "Alleluia" by the group.

**ROGERS CORNERS STUDY GROUP**  
Rogers Corners Study Group met March 19 at the home of Mrs. Erwin Wenk. A total of 16 members and four guests were present. Three new members joined the group.  
Marge Nusca gave a report on the cultural arts events.  
Caren Ziegler volunteered to go with Mary Ann Clancio to take lessons on "Food and People of Poland" for April.  
Helen Wolfgang and Marge Nusca presented the group's lesson, "Our Changing Rights to Land."  
The group's next meeting will feature a Polish meal, to be held at the home of Mrs. Norman Wenk on April 16.  
Members concluded with a silent auction.  
Refreshments were served by Mrs. Norman Wenk and Mrs. Erwin Wenk.

**IRON DEFICIENCIES**  
A 10-state federal study, done between 1968 and 1970, found significant iron deficiencies in some population groups. These may have been due to changes in diet and food preparation, such as use of non-iron cooking surfaces.

The IRS Publication 501, "Your Exemptions and Exemptions for Dependents," explains in detail the requirements for claiming exemptions for yourself, your spouse, and your dependents.

### Don't Overlook Income Tax Exemptions for Yourself, Dependents

Every exemption you claim for yourself or your dependents is worth a \$750 deduction from your income tax this year. What exemptions are allowed? Every taxpayer is allowed to claim one for himself. A married taxpayer also may be entitled to claim an exemption for his or her spouse on his or her separate return. Some taxpayers may qualify for additional exemptions for themselves and their spouses because of age or blindness. And you may claim an exemption for each person who qualifies as your dependent.

**VIVIANE WOODARD**  
**COSMETICS**  
475-8785  
Dorothy Ortring, Director

**Magic Mirror**  
**Beauty Salon**  
Open Tuesday thru Friday  
9 a.m. to 9 p.m.  
Saturday, 8 a.m. to 3 p.m.  
PHONE 665-0816

**VILLAGE BEAUTY SALON**  
101 N. MAIN  
LORETTA  
CHEYL - JANICE - CAROL - ARLENE - JANIE  
**OPEN TUESDAY THRU SATURDAY**  
Tuesday and Thursday Evenings

**THINK ABOUT IT**  
**Jet Spray Carpet Cleaning**  
Phone John Lixey 761-3025 or 475-1509  
YOUR BANKAMERICARD ACCEPTED

**Rings For Your Wedding Bells**



Champaign Lady's  
Carwin Lady's  
Willowbrook Lady's

Beautifully matched Keepsake wedding rings artistically crafted in 14K gold. Select yours today from our exciting, new collection by Keepsake.

**Keepsake**  
TRADITIONAL WEDDING RINGS

**WINANS JEWELRY**  
Rings enlarged to show detail. Trade-Mark Reg.



TWO YOUNG-AT-HEART pupils in Mrs. Meininger's helpful instruction. From left are Eleanor Meininger's crafts program at the Chelsea United Methodist Home tackle some new ceramic projects as their latest activity, with Mrs. Burns.

## Craft Program Appeals to Many Residents at Methodist Home

Three years ago, Eleanor Meininger began volunteering her time to work at the Chelsea United Methodist Home—"for just an hour a day."  
Now she is volunteering seven or eight hours per day to the crafts program for residents and has a certificate of appreciation from Home administrator Paul Closson, awarded Sunday at St. Paul United Church of Christ, to show for her efforts.  
All sorts of ceramics creations are produced by the 12 or so members of Mrs. Meininger's crafts program—from Christmas trees to owl nightlights. The articles produced are sold through the Home.  
"We work on the Christmas trees all year around," Mrs. Meininger reports. "This year we had several hundred orders for them, and we can sell them so much cheaper because we don't have the overhead—we'll sell them for \$9 this year. I priced them at \$17.98 at Penney's."  
The projects, in addition to being inexpensive items, also make for good activity projects for residents, many of whom have no other activity at all, and in some cases are brought to the work room in wheel chairs.  
"The people in the program—some of them can't see or can't hear, but they can use their hands," she says. The participants range in age from 75 to 92 years.

### Scholarships for Homemakers Only

If you're a homemaker with children at home or in school, life can become so hectic that you need some time to get a way and do something for yourself. Every June Michigan State University offers you this chance, with its College Week for Women, four days of on-campus activities designed particularly for homemakers. And the Women's National Farm and Garden Association offers full scholarships to College Week.

This year College Week for Women will be held June 25-28 in Michigan State University's Hubbard Hall. Its over-all theme is "This is Your World: Choice or Chance." Activities include daily assemblies, special interest classes of your choice, recreation, conversation, relaxation, and meals to make you forget your diet. The cost for attending full-time is \$45, including classes, meals and lodging. One day attendance, including lunch, is \$5.

If the idea sounds good to you, but the money is a problem, act now and apply for a scholarship. The Farm and Garden Scholarships cover the entire campus costs of classes, meals, and lodging.

Who's eligible for a scholarship? You are, if you're a homemaker with preschool or school-age children. First timers for College Week are especially welcome to apply. Interested? Then contact Helen Fairman at the Co-operative Extension Service, County Building, Ann Arbor (663-7511, extension 227) for more information and an application. Do it today. Completed applications are due by Friday, March 29.



MacDONALD-WADE, Mrs. Nancy MacDonald of 605 Grant and Donald MacDonald of Phoenix, Ariz., announce the engagement of their daughter, Teri Lee, to Timothy Allan Wade, son of Mr. and Mrs. William Wade of 47 Butternut Court. The prospective bridegroom is employed by Village Motor Sales. A Sept. 21 wedding is planned.

### Modern Mothers? Hear from Foreign Exchange Students

Modern Mothers Child Study Club met Tuesday, March 26, at the home of Pauline Forath. The program for the evening was entitled, "Gateways to Family Expansion."

One of the guest speakers was Mrs. Barbara Parker, a representative from Youth for Understanding (a foreign exchange student program).  
Guest speakers also included three foreign exchange students who are making a temporary home in Chelsea. Henrietta Schroeder from Norway is living with Mr. and Mrs. Mike Eubanks. Staying with Mr. and Mrs. Don Kvarnberg is Per Gellstrom from Sweden. Mr. and Mrs. Ron Harris are hosts to Juha Paunonen from Finland.

Mrs. Parker elaborated on various aspects of the program. She stated that "Youth for Understanding" is an organization that enables young people all over the world to visit the United States so they may receive a better understanding of Americans.  
The exchange students themselves answered many questions from club members. Questions centered around the differences of our educational systems and the likes and dislikes of their new experience. Other questions the students dealt with concerned their impression of the U.S. before they arrived, the differences of family life styles, diet and foods and various aspects of our government.

This presentation was given to 27 club members and five guests. Guests included Judy Eubanks, Jan Greiner, Marilyn Chasteen, Kay Poljan and Jan Pratt. Following the program, refreshments were served by the co-hostesses, Bobbie Johnson and Jeanene Riemen-schneider.

### Ruth Circle Plans April 3 Pot-Luck Lenten Service

Ruth Circle of the First United Methodist church met in the social center of the church on Wednesday, March 20 at 1 p.m. A desert luncheon was served to 19 members and one guest. Mrs. Iva Barton and Mrs. Calvin Summers served as hostesses.

In the absence of chairman Mrs. Ralph McCalla, Mrs. Edwin Gaunt opened the meeting with a poem, followed by a prayer.  
Plans were made for the April 3 pot-luck Lenten service. It was announced that a mother and daughter desert smorgasbord is planned for the evening of Friday, May 10, by the United Methodist Women.

Miss Marjorie North and Mrs. Esfelle Bascoms are out of the hospital and recuperating at home. Mrs. Beulah Ansette is still seriously ill in the hospital.

Mrs. Cora Dolan presented a program of slides on "The Creation" with Mrs. Helen Pearson reading the first chapter of Genesis. Mrs. Dolan then showed slides of the "Prince of Peace Memorial" in Silver Springs, Fla.

Next meeting of Ruth Circle is scheduled for April 17 at 1 p.m. in the social center of the First United Methodist church.

Subscribe today to The Standard!

### RSVP Program Needs Volunteers For Many Jobs

RSVP, the Retired Senior Volunteer Program, under the sponsorship of the Washtenaw County Council on Aging, acts as a referral service for men and women, ages 60 and over, who have experience, time and talent to volunteer but do not know if they are needed or where they are needed. Libraries, schools, hospitals, nursing homes and other social service agencies throughout Washtenaw county have requests for volunteers on file with RSVP. The program helps with transportation and meals and it insures the volunteers it helps.

In the Chelsea area, the Chelsea Public Schools need volunteers to work with children in a variety of ways. Chelsea's Home Meal Service program also presents opportunities for RSVP volunteers.  
Presently, Chelsea seniors who are enrolled with RSVP are volunteering in the schools, and with Chelsea Social Services.

RSVP's office is located at 2543 Pittsfield Blvd., Ann Arbor.  
The director, William Ennen, and the assistant director, Mrs. Jean Lawrence, are available at 971-7780 and welcome inquiries about the program.

Telephone Your Club News To 436-3377.

### 4-H CLUBS

**TERRIFIC TAILORS—**  
Terrific Tailors 4-H Club held their annual mothers' tea on Saturday, March 23 with mothers, relatives and friends as guests.

Modeling their completed garments were Cheryl Bareis, Linda Bristol, Elizabeth Bush, Radine Cheever, Mary Jo Elsete, Donna Finkbeiner, Lori Hines, Beth Heller, Nancy Heller, Sue Heller, Alice Jurgens, and Kelley Richards.  
Interspersed between models were piano solos by Linda Bristol, Elizabeth Bush, Sue Heller, and Diane Luick; an accordion solo by Lori Hines; and guitar and song by Nancy Heller.

Refreshments were served by Donna Finkbeiner, Alice Jurgens, Diane Luick, and Kelley Richards.

The scrapbook compiled by historian Angie Merkel was enjoyed by all.

The girls will model again at the County Spring Achievement Show, scheduled for Friday and Saturday, March 29 and 30, at Saline High school.

Next regular meeting will be a "Fun Thing" April 20.

Diane Luick, secretary.

**DON'T BE LAZY!**  
Subjects of the Inca emperor were taught that idleness breeds mischief, and the penalty for repeated laziness was death.

**UNPAINTED FURNITURE**  
Sanded and Ready for Your Finishing Touch

**CHESTS**  
3-DRAWER .....\$28.95  
4-DRAWER .....\$33.95  
5-DRAWER .....\$38.95

**NIGHTSTAND**  
3-DRAWER .....\$21.95

**DESK**  
\$33.95

**DOUBLE DRESSER**  
\$47.95

**DEACON'S BENCH**  
Storage Seat  
\$36.95

**OPEN BOOKCASES**  
30" 3-SHELF .....\$23.95  
36" 3-SHELF .....\$27.95  
36" 4-SHELF .....\$29.95

**Merkel HOME FURNISHINGS**

**LA-Z-BOY**  
RECLINA-ROCKER®



This chair is destined to be sought after by every member of your family. The generous proportions are enhanced by the burnished dark pine finish of the wood accents. It is fully reclining. It's the rocker that doesn't look like a rocker. La-Z-Boy's exclusive Comfort Selector's three-position leg-rest can be easily adjusted with or without reclining the chair. This gracious styling is certain to add charm and warmth to your home. A selection can be made from hundreds of attractive decorator colors and fabrics, most of them treated with Scotchgard Fabric Protector.

**Merkel Home Furnishings**  
Open Mon. & Fri. Until 9 Ph. 475-8621

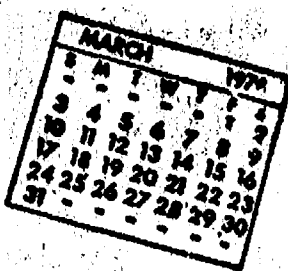
**MAKE MILK**  
the mainstay of your  
**LENTEN MEALS**  
Brighten and enrich lenten menus with milk and other dairy products.



**Hickory Ridge Farm Dairy**  
(Successor to Weinberg Dairy)  
Stockbridge Mich. Phone (517) 851-3000



## Community Calendar



Lifemakers, Thursday, April 4, 12:30 p.m., home of Mrs. Lionel Vickers for pot-luck dinner.

Discuss Supplemental Security Income with Social Security Administration representatives, Tuesday, April 2, Korner House, 1 to 3 p.m. For further information or transportation, call Ruth Chiswell at 475-259.

American Legion Auxiliary, Tuesday, April 2, 8 p.m., at the Legion Home at Cavanaugh Lake.

Annual egg supper, North Lake United Methodist church, Friday, April 5, 6:30 p.m. Adults, \$1.75; under 12, 90 cents; family, \$5.75. xadv42

Cavanaugh Lake-North Sylvan Grange, Tuesday, April 2, 12:30 p.m., home of Mr. and Mrs. Walter Wolfgang, 13031 Scioto Church Rd., for pot-luck dinner. Bring own table service and dish to pass.

Due to fire, the American Legion hospital equipment records were destroyed. Anyone having equipment is kindly asked to call Pat Merkel at 475-1824.

One hot meal a day delivered to the home of elderly or disabled, seven days a week, to people living in the Chelsea area. For information call 475-8014 or 475-2923.

Rummage sale, Chelsea Rebekah Lodge, Friday and Saturday, April 19 and 20, at Sylvan Township Hall. adv41

North Lake Co-Op Nursery is accepting applications for 1974-75 school year. For fun-loving 3- and 4-year-olds. Call 475-7061 or 475-7388 for information. adv45

District 3 Farm Bureau Women, Tuesday, April 2, at Romulus Methodist church. Luncheon reservation by March 23 to Mrs. Leroy Feldkamp, 428-3414, or Washtenaw County Farm Bureau office, 663-3141. Program: Mrs. Loraine Beebe, executive director of Michigan Consumer Council.

American Legion and Auxiliary hospital equipment available by contacting Pat Merkel at 475-1824.

## DEATHS

### Irv. Fred Layher Sylvan Resident Dies

Thursday at Jackson Hospital

Mrs. Fred (Mary) Eva Layher, 1301 Hayes Rd., died Thursday, April 21, in Jackson Hospital at the age of 78.

Born Dec. 31, 1895 in Saline, she was the daughter of Henry and Florence Clark Cornish.

She married Fred E. Layher May 4, 1914. He died July 15, 1934. She was a member of the Royal Neighbors of America of Ann Arbor and the Ladies Arbeiter Society of Ann Arbor.

She is survived by three sons, Raymond of Pinckney, Richard of Lake, and Duane of Chelsea; two daughters, Mrs. Wesley (Helen) of Chelsea and Mrs. Adeline (Phyllis) of Ann Arbor; 13 grandchildren; eight great-grandchildren and one brother, John Cornish of Los Angeles, Calif.

She was preceded in death by a son, Walter, on Nov. 11, 1972.

Funeral services were conducted Monday, March 25 at 2 p.m. at the Staffan Funeral Home by the Rev. William H. Keller. Burial followed in Washtenaw Memorial Park, Ann Arbor.

### Cressah Hindbaugh Indiana Resident Dies Friday

At Area Nursing Home

Miss Cressah L. Hindbaugh, 431 Burlington, Logansport, Ind., died Friday, March 22, at Cedar Knoll Rest home at the age of 91.

Born Nov. 5, 1882, she was the daughter of John and Mary Hounstman Hindbaugh.

She was a member of the United Methodist church in Logansport and for a number of years was secretary for "Columbia" Pictures and the Bob Merrill Publishing Co. She is survived by the niece Mrs. William Marsh of Bloomfield and Chelsea.

She was preceded in death by two sisters.

Graveside memorial services will be conducted Sunday, March 31, at Wilmont Cemetery, Wilmont, Ind.

Arrangements were by Staffan Funeral Home.

### Mrs. William Annette Former Detroit Resident Dies at Methodist Home

Mrs. William (Beulah) R. Annette of the Chelsea United Methodist Home, died Thursday, March 21, at Chelsea Community Hospital at the age of 78.

Born April 9, 1895, in Titusville, Pa., she was the daughter of Frank and Mary Rood Bennett.

She was married to William Annette, in 1926. He died April 21, 1954. She came to the Chelsea United Methodist Home Jan. 23, 1973 from Detroit.

She is survived by one son, Lt. Col. Robert W. Annette, of Carlisle Barracks, Pa., and seven grandchildren.

Funeral services were conducted Saturday, March 23, at 10:30 a.m. at the Chelsea United Methodist Home Chapel with the Rev. Richard L. Clemens officiating. Burial followed in Acacia Park Cemetery, Birmingham, where the Rev. Benjamin Holme officiated.

Arrangements were by Staffan Funeral Home.

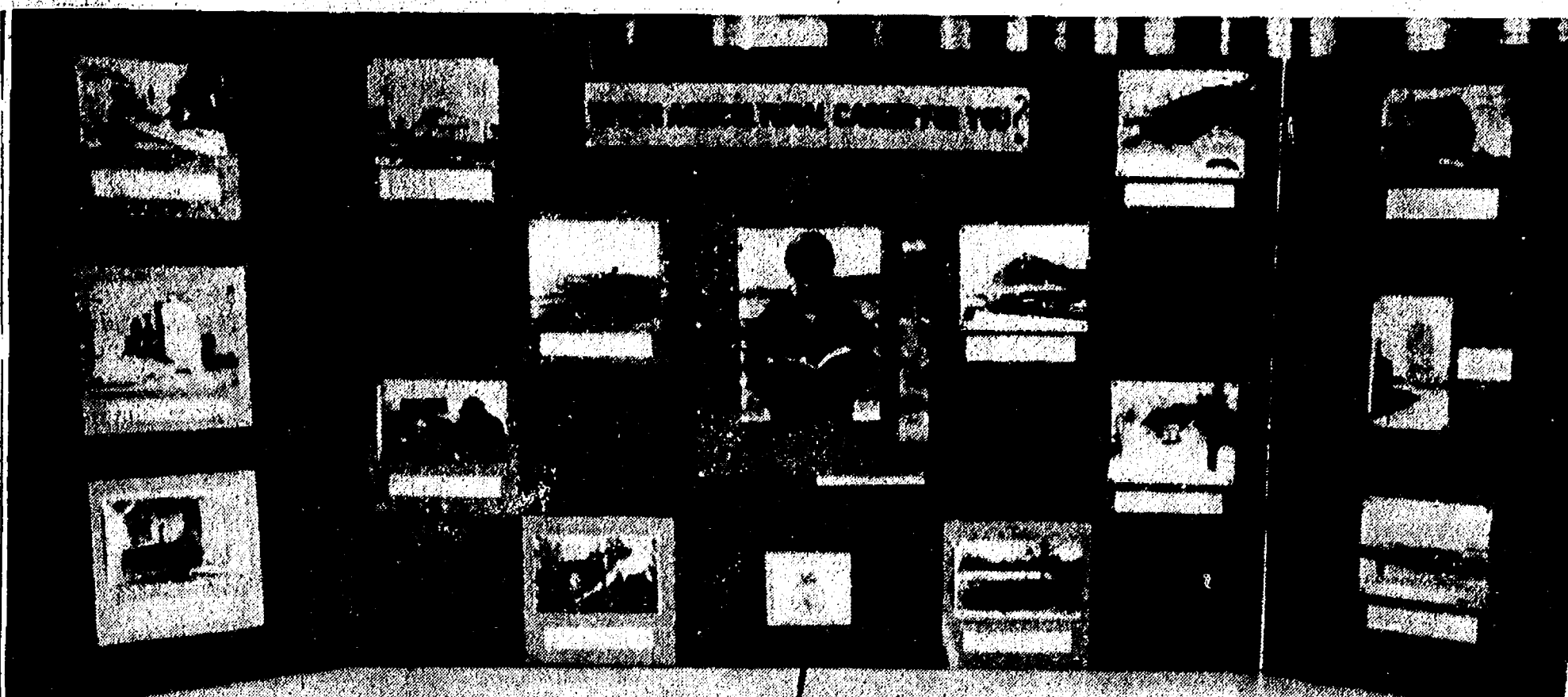
## BIRTHS

A son, Brian James, on Monday, March 25, to Mr. and Mrs. Dennis Goudreau of Dearborn. Maternal grandparents are Mr. and Mrs. Ralph Erskine of Chelsea; paternal grandparents are Mr. and Mrs. James Goudreau of St. Ignace.

### Choral Group Coming To Methodist Church

The Singing Ambassadors, an 18-voice choral ensemble from Asbury College, will sing at First United Methodist church on Sunday, April 7, at 10 a.m.

Sam Brown of Sam's Barber Shop is a patient in the Methodist Hospital in Houston, Tex., and is to undergo open heart surgery by Dr. Michael De Bakay.



WHICH AGRICULTURAL CAREER FOR YOU? was the theme of the Chelsea Future Farmers of America's display at the state FFA convention last week-end at Michigan State University. The display received a silver award.

### United Way Board Elects New Officers

Chelsea United Way—possibly better recognized by its former name, Chelsea Community Chest—has elected officers and committees from its board of directors for the 1974-75 year.

Officers elected are James P. Liebeck, president; Robert Kozma, vice-president; Norma Popovich, treasurer; Earl Klemer, secretary; and Robert Gaiser, financial chairman.

United Way's 1974 campaign will be chaired by Pat Borders, with Jeanene Riemenschneider, Paul Frisinger, Gerald Dresselhouse, Pat Dittmar, and Norma Popovich serving on her committee.

Serving on the budget committee under chairman Arlene Bareis will be Homer Kuhl, Norman Farley, Jeanene Riemenschneider, Lloyd Gray, Sharon Hodgson, and Jack Barnes.

Publicity and promotion will be handled by Sue Wood and Marketa Satterthwaite.

Chairing the nominating committee will be M. A. Bowen, with Brenda Larson and Roy Greenleaf serving on the committee.

Finances will be in the hands of Robert Gaiser, Gerald Ringe, and Robert Kozma.

### W. D. Reynolds Hooks Barracuda in Florida

Fishing in the Metropolitan Miami Fishing Tournament on a recent Florida vacation, W. D. Reynolds, 13973 Aberdeen Dr., Gregory, won angling recognition when he landed a 32-lb. barracuda in the general division. He was fishing out of Key West with Capt. Bill Wickers, Jr., on the Linda D II as guide. He will be awarded a citation and arm patch at the close of the tournament.



CHELSEA FFA MEMBERS who attended last week-end's state FFA convention at MSU were Dave Frame and Mary Verchereau, who were chapter delegates to the convention, and Mark Stapish, who attended to receive the State Farmer degree, which is presented to the top two percent of FFA members in the state. Stapish also ran unsuccessfully for state office. Not pictured is Neil Bollinger, who also received the State Farmer degree and was recognized for outstanding scholarship ability.

## Two Chelsea FFA Members Earn Coveted State Farmer Degrees

Two Chelsea Future Farmers of America members received the FFA State Farmer degree and the chapter received a silver award for its display at the state FFA convention, held this past week-end at Michigan State University.

Receiving the State Farmer award, which is accorded to only the top two percent of FFA members in the state, were Neil Bollinger and Mark Stapish. In addition, Bollinger was recognized for outstanding scholarship ability, and Stapish ran unsuccessfully for a state office.

Delegates to the convention from the Chelsea chapter were Mary Verchereau and Dave Frame, who represented the local FFA in all

elections and other voting procedures. "Which Agricultural Career for You?" was the theme of the local chapter's award-winning display.

### Glass in Door Broken Early Sunday at CHS

A door glass leading to the Chelsea High school locker room on the east side of the building was damaged early Sunday morning, Chelsea police report. The glass, approximately 24 in. by 36 in., will cost some \$50 to replace.

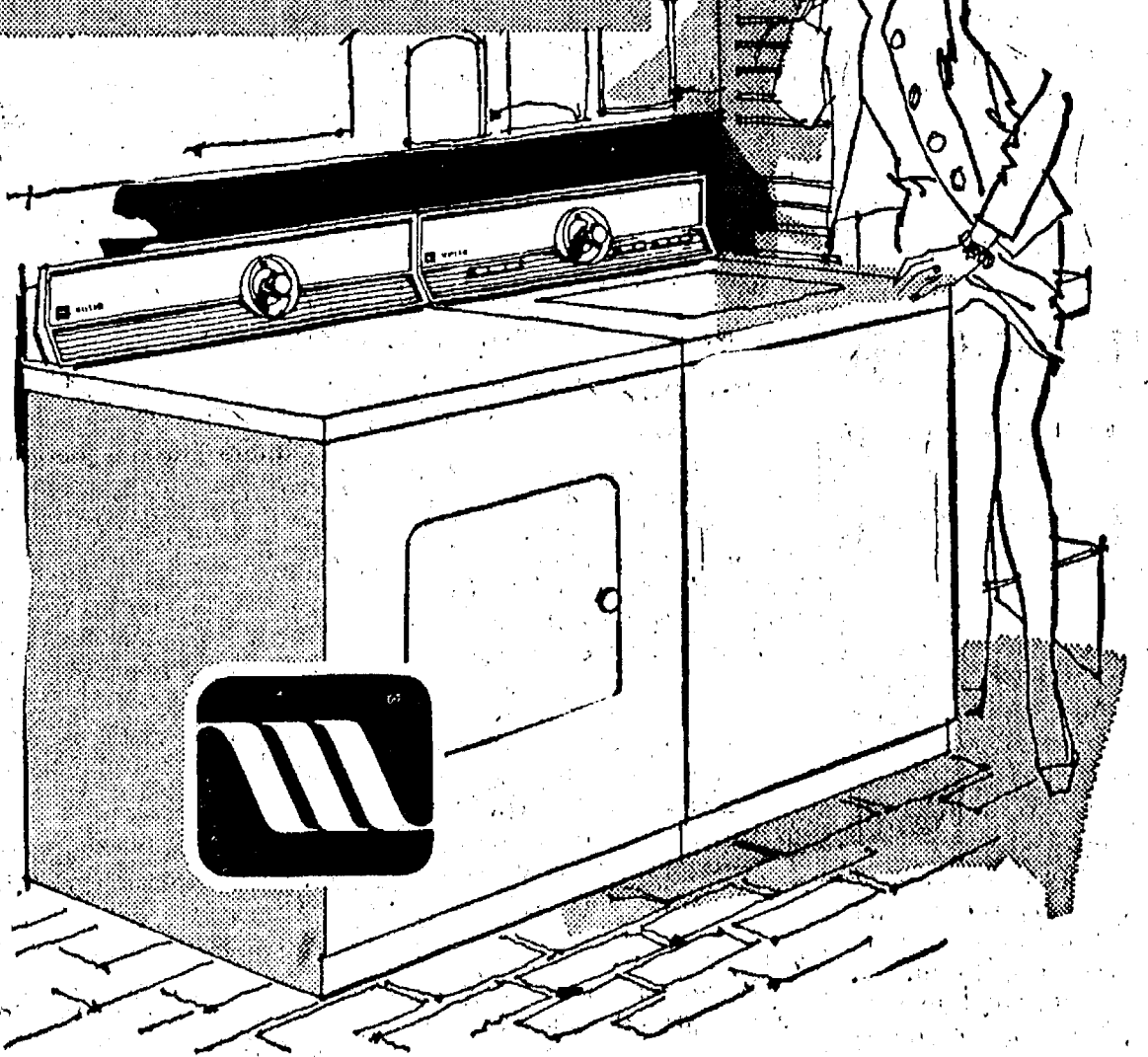
Telephone Your Club News To 475-1371

### Two Chelsea Students On Tour With Olivet College Band

Among the 86 student musicians touring with the Olivet College Symphony Band for its second annual spring tour will be two Chelsea natives, Mary Beth Detting and Kathryn Schafer.

The group is scheduled to appear in seven Michigan communities between April 1 and 3.

**DEPENDABILITY**  
MAKES THE GREAT  
**MAYTAG A606**  
and Matching Dryer  
**Your Best Buy!**



Maytag Automatic Washer. 2 speeds for all-fabric washing. Automatic fabric softener dispenser. Power-Fin Agitator for washing action that's gentle, thorough. Special soak cycle makes really dirty clothes a cinch to get clean.

Maytag Electronic Control Dryer. Fast dry clothes in gentle, low temperatures while electronic sensors constantly "feel" moisture in clothes. Shuts off when clothes are dried just right. One setting—no guessing for time and temp. Permanent press setting removes wrinkles.

**Buy Now While It Costs Less To Buy!**

Prices will increase April 1.

**HEYDLAUFF'S**  
113 North Main St., Chelsea Phone 475-1221



**SHERWIN-WILLIAMS SUPER KEM-TONE**  
All the painting skill you need is in this wall paint!

- Never too thick nor too thin.
- Goes on quickly, evenly, with brush or roller.
- Requires no pushing or tricky painting techniques.
- Gives you beautiful results every time.
- **MONEY-BACK GUARANTEE.** . . . purchase price of paint refunded if you're not completely satisfied.

AT **GAMBLES**  
110 N. MAIN ST. PH. 475-7472

WHEN YOU CAN BUY  
**ANDERSON PERMASHIELD NARROLINE WINDOWS**  
at **CHELSEA LUMBER**  
FOR **21% OFF**  
WHY SHOP ANYWHERE ELSE?





**1101 M-52, Chelsea**  
Corner of M-52 and Old US-12  
**OPEN: 9 to 9 Daily**  
**10 to 6 Sunday**

BORDEN'S OLD FASHION  
**ICE CREAM**  
1/2 gal. **89¢**

POLLY'S  
MEDIUM  
**EGGS**  
**49¢** doz

SEALTEST  
LIGHT N' LIVELY  
**MILK**  
1/2 GALLONS  
**2 for \$1**  
WITH COUPON

PILLSBURY  
BUTTERMILK  
**BISCUITS**  
9.5-OZ. PKG.  
**10¢**

## THE MEAT PEOPLE!

USDA CHOICE BEEF CHUCK  
**POT ROAST** . . . . . lb. **59¢**  
USDA CHOICE CENTER CUT  
**CHUCK STEAK** . . . . . lb. **69¢**  
SWIFT'S EVERSWEET  
**SLICED BACON** . . . . . Limit 2 Lb. **79¢**  
USDA CHOICE LARGE END  
**RIB STEAKS** . . . . . lb. **\$1.19**  
SWIFT'S TENDER LEAN SMALL  
**SPARE RIBS** . . . . . 3- to 5-Lb. Average Lb. **88¢**  
12-OZ. PKG. FARMER PEET'S MANY VARIETIES  
**SLICED LUNCHEAT** . . . . . **89¢**

FRESH GROUND  
**ALL-BEEF HAMBURG** . . . . . 3 Lbs. or More Lb. **78¢**  
SWIFT'S GOVT. INSPECTED  
**1/4 FRYER PARTS** . . . . . lb. **48¢**  
SWIFT'S PREMIUM  
**ALL-MEAT FRANKS** . . . . . Limit 2 with coupon Lb. **88¢**  
USDA GOVT. INSPECTED YOUNG  
**TOM TURKEYS** . . . . . Plus \$1.00 Off With Coupon Lb. **59¢**  
FARMER PEET'S CHUNK  
**LARGE BOLOGNA** . . . . . lb. **89¢**  
FARMER PEET'S  
**Hickory Smoked SLAB BACON** . . . . . Whole or Half Lb. **79¢**

**USDA CHOICE FAMILY PAC BEEF BUNDLE!**  
3 lbs. Round or Sirloin Steak **15 lbs.**  
3 lbs. Rib or Club Steak **\$14.99**  
3 lbs. Beef Chuck Roast  
3 lbs. Meaty Short Ribs  
3 lbs. Fresh Ground Hamburg

**LENTEN SEAFOOD SPECIALS!**  
FILLET OF SOLE . . . . . lb. **\$1.49**  
SEATROUT STEAKS . . . . . lb. **69¢**  
BONELESS TURBOT FILLETS . . . . . lb. **89¢**  
FRESH OCEAN PERCH FILLETS . . . . . lb. **\$1.29**  
RED SNAPPER FILLETS . . . . . lb. **\$1.19**  
PETITE LOBSTER TAILS . . . . . lb. **\$2.99**

**DELI TREATS!**  
BAKED BEANS . . . . . lb. **65¢**  
MACARONI SALAD . . . . . lb. **65¢**  
POLLY'S SUBMARINE SANDWICH . . . . . **69¢**  
ECKRICH BULK SLICED  
LARGE BOLOGNA . . . . . 1/2 lb. **59¢**  
SLICED SWISS & RYE CHEESE . . . . . 1/2 lb. **89¢**  
SLICED CHEESE & SALAMI . . . . . 1/2 lb. **89¢**

**ECKRICH LUNCH MEAT BUYS!**  
6 FLAVORS SLENDER  
SLICED MEAT, 3-oz. pkg. . . . . 2 for **89¢**  
SMOK-Y-LINKS, 10-oz. pkg. . . . . **89¢**  
ALL MEAT  
FUN FRANKS, 12-oz. pkg. . . . . **89¢**  
ALL MEAT SLICED  
BOLOGNA, 12-oz. pkg. . . . . **89¢**

**VALUABLE COUPON**  
SWIFT'S PREMIUM ALL MEAT  
**FRANKS**  
**88¢** lb.  
SAVE 62¢ WITH COUPON  
LIMIT 2 EXPIRES MARCH 31, 1974

FARMER PEET'S WHOLE OR HALF  
Semi-Boneless  
Hi-Style Ham, lb. **\$1.09**  
ARMOUR STAR CONVENIENCE  
Canned  
Ham, 1 1/2-lb. can **\$2.39**  
ARMOUR STAR SHANKLESS  
Canned  
Picnics, 3-lb. can **\$3.99**

**VALUABLE COUPON**  
**\$1.00 OFF**  
Neptune Young Tom - 16 to 20-lb. Avg.  
**TURKEYS**  
SAVE \$1.00 WITH COUPON  
LIMIT 1 EXPIRES MARCH 31, 1974

## NO LIMIT FROZEN FOOD SPECTACULAR!

ON-COR 2-LB.  
**BUFFET SUPPERS** . . . . . **\$1.29**  
JOHN'S 14-OZ.  
**PIZZAS** . . . . . **79¢**  
BIRDSEYE 9-OZ.  
**ORANGE PLUS** . . . . . **49¢**  
SAUSAGE  
PEPPERONI  
CHEESE  
HAMBURG  
SARA LEE PECAN 12.5-OZ.  
COFFEE  
CAKE

BIRDSEYE 9-OZ.  
**COOL WHIP** . . . . . **49¢**  
ORE-IDA 2-LB.  
**COTTAGE FRIES** . . . . . **49¢**  
HARRISS 8"  
PEACH  
PIE . . . . . **79¢**

### QUALITY FRESH PRODUCE

VINE RIPE FLORIDA  
**TOMATOES** . . . . . lb. **33¢**  
GOLDEN OR RED DELICIOUS  
**APPLES** . . . . . lb. **29¢**  
CALIFORNIA SWEET  
**ORANGES** . . . . . doz **69¢**  
GARDEN FRESH  
**Asparagus** . . . . . lb. **59¢**  
LARGE SPANISH  
**ONIONS** . . . . . lb. **13¢**  
CELLO PAK 1 LB.  
**CARROTS** 2 for **29¢**  
GARDEN FRESH  
**BROCCOLI** . . . . . **49¢**  
VINE RIPE  
**Cantaloupes** . . . . . **59¢**

### HEALTH & BEAUTY AIDS

20-OZ.  
**LISTERINE** . . . . . **99¢**  
60-CT. FLINSTONE  
**VITAMINS** . . . . . **\$1.29**  
5-OZ. 20¢ OFF  
**CREST** . . . . . 2 for **\$1.09**  
6-OZ.  
**NOXEMA** . . . . . **88¢**  
12-OZ.  
**PEPTO-BISMOL** . . . . . **\$1.09**  
11-Oz. Shave Cream  
**RISE** . . . . . **69¢**  
40-CT.  
**TAMPAX** . . . . . **\$1.27**  
14-OZ. SURE  
**Deodorant** . . . . . **\$1.49**

**VALUABLE COUPON**  
NINE LIVES  
**CAT FOOD**  
6 6.5-Oz. Cons. **\$1.00**  
SAVE 38¢ WITH COUPON  
LIMIT 6 EXPIRES MARCH 31, 1974

**VALUABLE COUPON**  
PILLSBURY  
**CAKE MIXES**  
3 19-Oz. Pkgs. **\$1.00**  
SAVE 17¢ WITH COUPON  
LIMIT 3 EXPIRES MARCH 31, 1974

**VALUABLE COUPON**  
MAXWELL HOUSE  
**INSTANT COFFEE**  
6-Oz. Jar **99¢**  
SAVE 30¢ WITH COUPON  
LIMIT 1 EXPIRES MARCH 31, 1974

**VALUABLE COUPON**  
**WESSON OIL**  
48-Oz. **\$1.49**  
SAVE 40¢ WITH COUPON  
LIMIT 1 EXPIRES MARCH 31, 1974

**VALUABLE COUPON**  
**SARAN WRAP**  
3 50-Ft. Rolls **\$1.00**  
SAVE 20¢ WITH COUPON  
LIMIT 3 EXPIRES MARCH 31, 1974

**VALUABLE COUPON**  
SCOT LAD  
**SALTINES**  
3 1-Lb. Boxes **\$1.00**  
SAVE 35¢ WITH COUPON  
LIMIT 3 EXPIRES MARCH 31, 1974

**VALUABLE COUPON**  
SEALTEST LIGHT N' LIVELY  
**MILK**  
2 1/2-Gal. Ctns. **\$1.00**  
SAVE 46¢ WITH COUPON  
LIMIT 2 EXPIRES MARCH 31, 1974

**VALUABLE COUPON**  
WAGNER'S  
**FRUIT DRINKS**  
4 32-Oz. Bottles **\$1.00**  
SAVE 28¢ WITH COUPON  
LIMIT 4 EXPIRES MARCH 31, 1974

## SAVE! ON THESE LOW, LOW POLLY'S SPECIALS

STA-PUF GALLON  
FABRIC SOFTENER . . . . . **79¢**  
48-OZ.  
WESSON  
OIL . . . . . With Coupon **\$1.49**  
WAGNER'S 32-OZ.  
FRUIT  
DRINKS . . . . . With Coupon **4 for \$1**  
GREEN GIANT 17-OZ.  
CREAM STYLE CORN . . . . . **5 for \$1**  
GREEN GIANT 17-OZ.  
WHOLE KERNEL  
CORN . . . . . **5 for \$1**  
GREEN GIANT 12-OZ.  
NIBLETS CORN . . . . . **5 for \$1**  
16-OZ. BOTTLES  
COCA-COLA . . . . . 8 pac **79¢** Plus Deposit  
ASSORTED  
KEEBLER COOKIES . . . . . 2 pkgs. **99¢**  
PAWN FRESH 5 3/4-OZ.  
MUSHROOM  
SAUCE . . . . . **10¢**  
JIFFY MIX 7-OZ.  
BLUEBERRY  
MUFFIN . . . . . **8 for \$1**  
JIFFY 7-OZ.  
HONEY & DATE  
MUFFIN MIX . . . . . **8 for \$1**  
JIFFY 8.5-OZ.  
CORN  
MUFFIN MIX . . . . . **10¢**  
JIFFY 8-OZ.  
BUTTERMILK  
BISCUIT MIX . . . . . **10¢**  
AJAX  
CLEANSER . . . . . **10¢**  
1-LB. BOX SCOT LAD  
SALTINES . . . . . With Coupon **3 for \$1**  
STARKIST CHUNK 4-OZ.  
LIGHT TUNA FISH . . . . . **3 for \$1**  
1-LB. CAN  
VETS DOG FOOD . . . . . **9 for \$1**  
BROOKS HOT  
CHILI  
BEANS . . . . . **4 for \$1**  
BROOKS HOT 12-OZ.  
TANGY  
CATSUP . . . . . **4 for \$1**  
ARMOUR 5-OZ.  
VIENNA  
SAUSAGE . . . . . **3 for \$1**  
RIVAL RATION 15.5-OZ.  
DOG  
FOOD . . . . . **6 for \$1**  
200-CT. BOX KLEENEX  
FACIAL TISSUES . . . . . **3 for \$1**  
FLAVORKIST 22-OZ.  
SANDWICH COOKIES . . . . . **69¢**  
FLAVORKIST 26-OZ.  
FRUIT BARS . . . . . **71¢**  
PILLSBURY H. J. 32-OZ.  
INSTANT POTATOES . . . . . **98¢**  
BORDEN'S 12 PAK  
ICE CREAM BAR STIX . . . . . **79¢**  
DEL MONTE 1-LB.  
MEDIUM PRUNES . . . . . **49¢**  
DEL MONTE 12-OZ.  
PITTED PRUNES . . . . . **59¢**  
KLEENEX  
JUMBO TOWELS . . . . . **3 for \$1**  
SURE-GOOD LONDON 18-OZ.  
CREME COOKIES . . . . . **69¢**  
HOLSUM 20-OZ.  
PUMPERNICKLE RYE . . . . . **49¢**  
HOLSUM 20-OZ.  
RYE SANDWICH BREAD . . . . . **49¢**  
WONDER 6-CT.  
RAISIN ROUNDS . . . . . **49¢**  
WONDER 6-CT.  
ENGLISH MUFFINS . . . . . **49¢**



Ads  
Taken  
11 p.m.  
Tuesday

# USE ACTION-PACKED WANT ADS

Just  
Phone  
475-1371

## WANT ADS

### The Chelsea Standard WANT AD RATES

PAID IN ADVANCE—All regular advertisements, 75 cents for 25 words or less, each insertion. Count each figure as a word. For more than 25 words add 5 cents per word for each insertion. "Blind" ads or box number ads, 50¢ extra per insertion. CASHIER RATES—Same as cash in advance, with 25 cents bookkeeping charge if not paid before 1 p.m. Tuesday following publication. Pay in advance, send cash or stamps and save 10¢.

DISPLAY WANT ADS—Rate, \$1.40 per column inch, single column, width only. 5-point and 14-point light type only. No borders or boldface type. Minimum 1 inch.

CARDS OF THANKS or MEMORIALS—Single paragraph style, \$1.50 per insertion for 50 words or less; 3 cents per word beyond 50 words. COPY DEADLINE—1 p.m. Tuesday week of publication.

### "HILLTOP"

PLUMBING, HEATING & ELECTRICAL CONTRACTING  
Robert Shears, Master Plumber

NO JOB TOO LARGE  
OR TOO SMALL  
1414 S. Main St., Chelsea  
475-2849

### FORMAL WEAR RENTAL SERVICE

Proms - Weddings - Special Events  
6 different colors.

Foster's Men's Wear

CAR & TRUCK LEASING. For details see Lyle Chriswell at Palmer Motor Sales, 475-1301.

### Custom Built Homes

O—Hi We Remodel too.

U—can count on us

N—Job Too Small

T—rim Inside & Out.

R—ough-in Only If

Y—ou Want to Finish

S—iding Aluminum, 6" Gutters

I—mmediate Attention

D—ALE COOK & CO.

E—stimates, Free

### BUILDERS

Please Call

475-8863

### DALE COOK

17th

### IT'S SPRING

Big selection  
Ladies, Men's,  
Boy's, Girl's Wear.

Main Floor

It's Jammed!

DANCER'S

41

PUT YOUR best face forward. Call for a complimentary facial in your home and see why we say "ours is the cosmetic that works and gets results." Donna Williams, 475-8009.

## WANT ADS

CALL NOW  
SAVE \$\$\$  
Greenwood

Siding - Remodeling  
FREE ESTIMATES  
Call  
Chelsea 475-2400

FOR RENT—Fair Service Center for meetings, parties, wedding receptions, etc. Weekdays or weekends. Contact John Wellnitz, phone 475-1518.

### TRUCK PROBLEMS?

All types of truck repair.  
We come to you.

Phone 475-1431

### REAL ESTATE

NICE OLDER HOME one block from So. School, Chelsea. Owner moving outstate.

NICE MOBILE HOME, private lake, many extras. Dexter schools.

4-BEDROOM bi-level, Ann Arbor, quiet street, park and tennis courts very close.

JACKSON, MICH., 2 minutes from I-94, 3-bedroom, full basement, 2 blocks from Schuler's. Priced in mid 20s.

Eibler & St. Amour  
Realtors

8047 Main, Dexter 426-4659  
Eves.: George Beltz 665-5419  
Eves.: Dave Murphy 475-1274

### GARDENER'S SUPPLIES

—ORTHO DORMANT SPRAY  
—PEAT MOSS  
—POTTING SOIL  
—TOMATO SOIL  
—DRICURE  
—DEHYDRATED COW MANURE  
—BONE MEAL  
—MILORGANITE  
—SPRING FLOWER BULBS  
—GARDEN SEEDS  
—ONION SETS  
—BULK GRASS SEED  
—SCOTT'S LAWN SUPPLIES  
—POWER EQUIPMENT

Chelsea Hardware  
GR 475-1121

CASHIER  
CHECK-OUT CLERK

Woman must be over 21 yrs. old.

Rick's Market

FOR SALE—8N Ford tractor, in good condition. Ph. 475-8852.

## WANT ADS

KNAPP SHOES  
For Cushion Comfort  
Robert Robbins  
475-7282

STOCKBRIDGE SCHOOLS—Comfortable ranch only one year old. 3-bedroom starter home with a beautiful fireplace in the living room.

ANN ARBOR SCHOOLS—Ideal home for Mr. Fix-It, \$17,500 will buy you a cozy 2-bedroom home with dining room that needs someone interested in fixing it up. Large lot, too!

CENTRAL VILLAGE AREA—3 bedrooms, dining room, family room, basement, and 2-car garage. This lovely home also has a backyard patio, fenced-in yard, and appliances included. A good buy.

DUTCH COLONIAL—3-bedroom, home with dining room, fireplace, study, 1½ baths, basement, and 2-car garage. Chelsea schools.

RUSTIC HOME on North Lake—This waterfront year-round 4-bedroom home is located on over 3 beautiful wooded acres. It features a fireplace, walk-out basement and spacious front porch.

EXECUTIVE RANCH REDUCED—This 5-bedroom quality home has a dining room, family room, 2 baths, and 2½-car garage. Chelsea schools.

4 BEDROOMS—Spacious home located in Chelsea school district. It offers a dining room, family room, fireplace, 2½ baths, and 2-car garage. Several other extras are also included. Phone us.

ROBERT H.  
THORNTON  
JR. EC  
REALTOR

323 S. Main St., Chelsea 475-8028  
Mark McKernan 475-8424  
John Pierson 475-2064  
Helen Lancaster 475-1198  
Bob Riemschneider 475-1469  
Bob Thornton 475-8857

### ROAD GRADING

Complete maintenance.  
G. MILLER  
Ph. 426-4564, evenings.

### Special of the Week

1973 Buick LeSabre 2-dr. hardtop.  
Air conditioned.

\$2900

### USED CARS

1973 BUICK Riviera, air cond. \$4500

1971 FORD LTD 2-dr. hardtop, air cond. \$1600

1970 BUICK Electra 4-dr. hardtop, air cond. \$1800

1970 BUICK Electra 225 4-dr. hardtop, air cond. \$1800

1970 VOLKSWAGEN square back station wagon \$1500

1969 BUICK LeSabre 4-dr. hardtop, air cond. \$800

1969 PONTIAC Catalina station wagon, air cond. \$1100

1969 CHEVROLET Chevelle 2-dr. hardtop \$1000

1968 BUICK Sportwagon, air cond. \$600

1968 OLDSMOBILE Delmont 88 4-dr. \$700

1968 MERCURY Monterey 4-dr. air cond. \$700

1968 BUICK Electra 225 2-dr. hardtop, air cond. \$800

1966 OLDSMOBILE Delmont 88 4-dr. hardtop, air cond. \$400

SPRAGUE  
Buick-Olds-Opel, Inc.  
Phone 475-8664  
1500 S. Main St., Chelsea

LAST SHOWING in  
Noah Heights Model

Just a few more lots are available to build on.

Living in Noah Heights is like living in the north woods.

Chelsea schools, nature trails, fishing and hunting.

Model open Saturday and Sunday, 1-6 p.m.  
Office phone: 475-2828  
Model phone: 475-1958



"Wait until you see what the beauty salon that uses the Standard Want Ads did to my secretary - Wowee!"

## WANT ADS

13 ACRES with flowing stream. Terms.

List your property with us for fast, efficient service.

R. D. MILLER  
REAL ESTATE  
Real Estate Broker  
475-7311  
15775 Cavanaugh Lake Rd.  
Chelsea, Mich.

EVELYN WHITE  
475-7551

21th

SNOWMOBILE TRAILERS, tilt and swing, \$139.95. Snowmobile sleds, \$39.95. Two-piece snowmobile suits, regular \$79.95, special \$41.95. Snowmobile boots, regular \$15.95, children's, \$6.95, ladies, \$8.95, men's, \$9.95. Coffman's Sport Center, 1011 Lansing Rd., Jackson. Open 9-9 daily, Sundays, 12-5.

HOUSE FOR SALE—Brick, 3 bedrooms, 1½ baths, more than 2,100 sq. ft., with garage. 800 Book. Ph. 475-8911.

21th

WATERLOO Recreation Area—A beautiful, rolling, 13-acre building site, \$1,500 per acre, land contract. Chelsea schools.

CHELSEA SCHOOLS, 2 & 10-acre bldg. sites. Trout stream borders one parcel near Joslin Lake. 7% land contract.

VILLAGE OF STOCKBRIDGE—Nice, older 2-family home, new furnace, city water and sewer, \$25,500. Terms possible.

RAMBLING ranch type home, needing work, plus 2 mobile homes on three acres. Black-top road, \$28,500. Stockbridge schools.

6.8 ACRES overlooking Joslin Lake. Private easement to lake. 4-in. well, Chelsea schools.

34 ACRES on surfaced road. Nice building sites, \$1,100 per acre. Stockbridge schools.

DEXTER SCHOOL, excellent 10-acre building sites. Wooded or sunny. Land contract terms.

ON 2 ACRES, 3-bdrm. ranch, 2½ baths, dining room, full walk-out basement equipped for living quarters. 2-car garage. \$38,000. Stockbridge schools.

SPARKLING CLEAN spacious 2-story house — 4 lg. bdrms., hwd. floors. In village of Stockbridge, \$35,000.

WATERLOO REALTY  
355 Clear Lake

JOANN WARYWODA, BROKER  
Phone 475-8674

Evenings:  
Steve Sullivan, salesman and licensed builder, 475-1743  
Sue Lewie, 475-2377.

41

McCulloch  
Chain Saws

WE SELL, SERVICE,  
SHARPEN AND TRADE.

Chelsea Hardware

21th

Windows, Screens,  
Screen Doors Repaired

Plexiglass, window glass, aluminum, fiberglass and galvanized screen.

Chelsea Hardware  
Ph. 475-1121

41

PIANO TUNING and repair. Call Ray Hutchinson, 665-5501.

PORSCHE 914-6

911S wheels, Michelin, appearance group with cowboy seats, new Koni shocks, Ziebart, all service records since new. 1970, \$4,500. Negotiable. Ph. 602-7769.

41

## WANT ADS

McCall's  
Mobile Feed Service

Now Open for business,  
8 a.m. to 8 p.m.  
12875 Old US-12, Chelsea

Water softener salt, Wayne dog food, cat food, horse feed.

WAYNE FEEDS

34th

POLICEMAN - POLICEMAN  
—No experience required, we train. Excellent salary and benefits. All guaranteed on a 2-year enlistment with the U. S. Army if you can qualify. Call 665-3731 for an appointment today.

41

## REAL ESTATE

3-BEDROOM ranch home with many extras, fireplace in family room, overlooking in-ground swimming pool, attached garage, on 1.2 acre, Stockbridge schools. \$36,000.

6 BEDROOMS—two-story farm house with beautiful tall maple trees on 1.3 acres backing to state land; 3 minutes to town. Chelsea schools. \$27,500.

WATERLOO Recreation Area—A beautiful, rolling, 13-acre building site, \$1,500 per acre, land contract. Chelsea schools.

CHELSEA SCHOOLS, 2 & 10-acre bldg. sites. Trout stream borders one parcel near Joslin Lake. 7% land contract.

VILLAGE OF STOCKBRIDGE—Nice, older 2-family home, new furnace, city water and sewer, \$25,500. Terms possible.

RAMBLING ranch type home, needing work, plus 2 mobile homes on three acres. Black-top road, \$28,500. Stockbridge schools.

6.8 ACRES overlooking Joslin Lake. Private easement to lake. 4-in. well, Chelsea schools.

34 ACRES on surfaced road. Nice building sites, \$1,100 per acre. Stockbridge schools.

DEXTER SCHOOL, excellent 10-acre building sites. Wooded or sunny. Land contract terms.

ON 2 ACRES, 3-bdrm. ranch, 2½ baths, dining room, full walk-out basement equipped for living quarters. 2-car garage. \$38,000. Stockbridge schools.

SPARKLING CLEAN spacious 2-story house — 4 lg. bdrms., hwd. floors. In village of Stockbridge, \$35,000.

WATERLOO REALTY  
355 Clear Lake

JOANN WARYWODA, BROKER  
Phone 475-8674

Evenings:  
Steve Sullivan, salesman and licensed builder, 475-1743  
Sue Lewie, 475-2377.

41

McCulloch  
Chain Saws

WE SELL, SERVICE,  
SHARPEN AND TRADE.

Chelsea Hardware

21th

Windows, Screens,  
Screen Doors Repaired

Plexiglass, window glass, aluminum, fiberglass and galvanized screen.

Chelsea Hardware  
Ph. 475-1121

41

PIANO TUNING and repair. Call Ray Hutchinson, 665-5501.

PORSCHE 914-6

## WANT ADS

CLOGGED  
SEWER

Reynolds Sewer  
Service

We Clean Sewers Without Digging  
Drains Cleaned Electrically

FREE ESTIMATES  
2-YEAR GUARANTEE

Phone Ann Arbor NO 2-5277  
"Sewer Cleaning Is Our Business—  
Not a Side Line"

SWIM WEAR

Ladies, Men's,  
Boy's, Girl's

Buy now  
while the selection  
is good.

DANCER'S

64 AUTOMATIC Kenmore washer, good condition. Ph. 475-1439, evenings.

## CHELSEA

\$22,500—3-bedroom ranch, garage, new decoration, immediate possession.

EXECUTIVE RANCH—3,500 sq. ft., dining area, 3½ baths, study, extra large rec. room, 2 fireplaces, 10-acre setting, Village of Chelsea.

\$35,900—3- to 4-bedroom older home, close to shopping, dining room, 1½ baths.

\$38,900—2-bedroom older home, dining room, large living room, heated garage, large lot.

EXCELLENT CONDITION—Excellent location for Jr. & High school, 6 bedrooms, 3 baths, fireplace, walk-out lower level to large back yard.

BEAUTIFUL wooded 80x340 lot with unfinished brick year-round home on Joslin Lake. \$36,300.

HALF MOON LAKE—4-bedroom home, large lot, 2 baths, fireplace, lake access. \$36,400.

## FARMS

119-ACRE Dairy or Beef farm, excellent soil, located 2 miles south of Chelsea on Jerusalem Rd. Large 4-bedroom, remodeled farm home, excellent barn.

204 ACRES—Immaculate 3-bedroom farm home, study, large living room with beautiful fireplace, completely renovated home with modern custom kitchen. Private lake frontage, woods would make ideal cattle or horse show farm, all buildings in excellent condition.

115 ACRES—4-bedroom centennial farm home, 15 minutes west of Ann Arbor on Fletcher Rd., good frontage.

VACANT LAND—40 acres, 24 acres, 10 acres, 1½ acres. Many to choose from located in Chelsea and Manchester School districts.

## FRISINGER

REALTORS

Chelsea 475-8681

Evenings:  
Hope Bushnell - 475-7180  
Herman Koenn - 475-2613  
Bob Koch - 426-4754  
Mary Ann Staebler - 475-1432  
Paul Frisinger - 475-2621  
Toby Peterson - 475-2718

41th

WATERLOO REALTY  
355 Clear Lake

JOANN WARYWODA, BROKER  
Phone 475-8674

Evenings:  
Steve Sullivan, salesman and licensed builder, 475-1743  
Sue Lewie, 475-2377.

41

McCulloch  
Chain Saws

WE SELL, SERVICE,  
SHARPEN AND TRADE.

Chelsea Hardware

21th

Windows, Screens,  
Screen Doors Repaired

Plexiglass, window glass, aluminum, fiberglass and galvanized screen.

Chelsea Hardware  
Ph. 475-1121

41

PIANO TUNING and repair. Call Ray Hutchinson, 665-5501.

PORSCHE 914-6

911S wheels, Michelin, appearance group with cowboy seats, new Koni shocks, Ziebart, all service records since new. 1970, \$4,500. Negotiable. Ph. 602-7769.

41

## WANT ADS

PATCHING and PLASTERING.  
Call 475-7489.

## FOR SALE

CAVANAUGH LAKE  
WINTERIZED, lake-front cottage. Exterior newly painted. 827 Ridge Rd. \$18,500.

Phone

EVELYN WHITE  
475-7551 after 5 p.m.  
ROY D. MILLER, Broker  
475-7311

18th









# BOWLING NEWS



## Old Timers League

Standings as of March 22

	W	L
Nelson Realtors	70 1/2	45 1/2
A.S.C.	70	46
Sprentall's	68	48
Milan Screw Products	66	50
Hotel Service	63	51
Deno's Pin Room	65	51
Cloverleaf Lanes	64 1/2	51 1/2
Harman Ins.	63	53
Bob & Otto Standard	61	55
Team No. 16	57	59
Conlin Travel	54	62
Sportsman's Tavern	52 1/2	63 1/2
Stein & Goetz	50 1/2	65 1/2
Colonial Lanes	50 1/2	65 1/2
Ehins & Son	49 1/2	66 1/2
Team No. 14	48	68
Merkel Furniture	44 1/2	71 1/2
Team No. 18	44 1/2	71 1/2

High team game: Deno's Pin Room, 887.  
High team series: Hotzel, 2,490.  
High ind. game: T. Phillips, 234, 561.

High ind. series: G. Lawrence, 200, 570.  
Other 200 games, 500 series and over: W. Butzin, 211; V. Rutz, 208; C. Boyd, 205; J. McMillan, 204; U. Pilets, 204; J. Otto, 534; V. Rutz, 548; W. Butzin, 538; J. Bright, 528; S. Dennison, 525; W. Japp, 523; N. Wenk, 517; U. Pilets, 512; L. Dell, 508; C. Boyd, 502.  
Team won three: Nelson Realtors, Milan Screw Products, Deno's Pin Room, Cloverleaf, Colonial Lanes and Team No. 18.

## Chelsea Women's Bowling Club

Standings as of March 20

	W	L
Jiffy Mixes	80 1/2	24 1/2
Chelsea Lanes	79	25
Parish's Cleaners	75	29
Washtenaw Engr. Co.	74	26
Arbor Advertising	70	30
Chelsea Grinding	65 1/2	34 1/2
Chelsea Milling	65 1/2	34 1/2
Norris Electric	63 1/2	36 1/2
Thompson's Pizzeria	62	38
Wolverine Lounge	57 1/2	42 1/2
United Oil Company	49	50
Schneider's Grocery	48 1/2	51 1/2
To and Judy's	48 1/2	51 1/2
Heydlauff's	48	52
Bridges Chevrolet	46	54
Larry's Roadside Mkt.	36 1/2	63 1/2
Rockwell International	36	64
Mark IV	32	68

450 series and over: J. Hafner, 563; J. Schlee, 552; B. Noll, 543; D. Anderson, 536; J. Koch, 494; G. Kuhl, 494; D. Eisenbeiser, 493; D. Judson, 489; P. Poertner, 487; P. Fitzsimmons, 483; E. Wiard, 483; D. Verwey, 480; R. Hummel, 479; M. Kozminski, 477; J. Larson, 477; L. Bradbury, 473; B. Fritz, 472; J. Norris, 463; T. Steinaway, 462; L. Orlovski, 457; S. Klink, 456; D. Alber, 456.  
150 games and over: J. Hafner, 169, 198; J. Schlee, 173, 206; B. Noll, 160, 206, 177; D. Anderson, 193, 173; J. Koch, 205, 159; G. Kuhl, 191, 174; D. Eisenbeiser, 168, 203; D. Judson, 153, 171, 165; P. Poertner, 191, 150; P. Fitzsimmons, 186, 158; E. Wiard, 153, 169; D. Verwey, 175, 161; R. Hummel, 181, 174; M. Kozminski, 170, 169; B. Larson, 168, 156, 155; L. Bradbury, 180, 163; B. Fritz, 169, 171; J. Norris, 158, 168; T. Steinaway, 172, 156; L. Orlovski, 167, 155; S. Klink, 150, 152, 154; D. Alber, 167, 163; S. Ringe, 175; A. Bohaf, 166; A. Sindlinger, 175; M. Sutter, 167; L. Behnke, 150; J. Fouty, 156; M. Kruse, 154; S. Ellenwood, 153; M. Heim, 157; J. Seitz, 155; L. Hafner, 162; N. Packard, 167; G. Salyer, 153; K. Kamyszek, 154; A. Merkel, 177; B. Fike, 168; R. Whitaker, 160; S. Robards, 150; E. Kuhl, 154; V. Kelly, 160; A. Fahrner, 170; A. Eisele, 164; P. Wurster, 150, 169; N. Kern, 152, 154.

## Sunday Swingers

Standings as of March 24

	W	L
H & M	43	17
Strangers	37 1/2	22 1/2
Sandbaggers	36	24
CeeBees	34	26
The Avengers	34	26
The Holdogs	34	26
K-O's	33 1/2	26 1/2
Odd Couple	32 1/2	27 1/2
The Newcomers	30 1/2	29 1/2
A & C	30	30
The Irratics	30	30
Achtenboldts	27 1/2	32 1/2
On Timers	26 1/2	33 1/2
The Unweds	25 1/2	34 1/2
Six Packs	25	35
Butternuts	22 1/2	37 1/2
Pin Peddlers	19	41
Sidekicks	19	41

Women, games 150 and over: G. Weiner, 161; J. Weiner, 163; S. Arnold, 155; R. McGibney, 156, 160; B. Ahrens, 158; E. Dresch, 160; N. Kern, 192, 187; J. Boku, 158; N. Collins, 167; M. Usher, 161; T. Steinaway, 187, 154; L. Kinsey, 168; B. Johnson, 156; N. Kennedy, 173, 168; P. McGibney, 151; S. Bauers, 160; J. Hafner, 156, 155, 178; D. Verwey, 157, 171; A. Steinaway, 187.  
Women, series 425 and over: B. Hafley, 425; R. McGibney, 449; B. Ahrens, 429; N. Kern, 521; J. Boku, 430; N. Collins, 438; T. Steinaway, 472; N. Kennedy, 490; S. Bauers, 455; J. Stapish, 499; D. Verwey, 439; A. Steinaway, 448.  
Men, games 175 and over: R. Weiner, 178; D. Cumper, 164, 188; V. Hafley, 178, 179; W. Brown, 210; J. Koepke, 180; G. Dresch, 183, 178; D. Boku, 206, 226, 176; J. Collins, 187; R. Knowlton, 177; R. Usher, 191, 201; W. Steinaway, 206; H. Johnson, 183, 200; R. Kinsey, 192; B. McGibney, 181; J. Eder, 186, 188.  
Men, series 475 and over: D. Cumper, 516; P. McGibney, 493; V. Hafley, 497; W. Brown, 530; J. Ahrens, 476; G. Dresch, 529; D. Boku, 608; J. Collins, 499; R. Usher, 539; D. Johnson, 483; W. Steinaway, 509; H. Johnson, 524; R. Kinsey, 480; B. McGibney, 495; J. Eder, 510.

Men, games 175 and over: R. Weiner, 178; D. Cumper, 164, 188; V. Hafley, 178, 179; W. Brown, 210; J. Koepke, 180; G. Dresch, 183, 178; D. Boku, 206, 226, 176; J. Collins, 187; R. Knowlton, 177; R. Usher, 191, 201; W. Steinaway, 206; H. Johnson, 183, 200; R. Kinsey, 192; B. McGibney, 181; J. Eder, 186, 188.  
Men, series 475 and over: D. Cumper, 516; P. McGibney, 493; V. Hafley, 497; W. Brown, 530; J. Ahrens, 476; G. Dresch, 529; D. Boku, 608; J. Collins, 499; R. Usher, 539; D. Johnson, 483; W. Steinaway, 509; H. Johnson, 524; R. Kinsey, 480; B. McGibney, 495; J. Eder, 510.

## Junior Swingers

Standings as of March 23

	W	L
Super Stars	71	45
Rod II	70	46
Pin Smokers	69	47
The Good Guys	68	48
The Alley Cats	67	49
The Freaks	59	57
YBA Scorers	54	62
Hugh Puppies	54	62
Team 10	47 1/2	68 1/2
The Swingers	16 1/2	83 1/2

Girls, games over 120: T. Thomas, 142; K. Fairbanks, 137; D. Roy, 134; B. Roy, 148; D. Alexander, 147, 128, 121; K. Tobin, 129, 138; T. Lutovsky, 125, 155, 155; M. Fahrner, 142, 138, 145; S. Schulze, 142, 146, 151; C. Miller, 128; C. Collins, 148, 164, 125; K. Milliken, 131, 133; S. Fahrner, 147.  
Girls, series over 350: D. Roy, 357; D. Alexander, 396; T. Lutovsky, 435; M. Fahrner, 425; B. Loveley, 363; K. Tobin, 382; S. Schulze, 439; C. Collins, 437; K. Milliken, 375; S. Fahrner, 354.  
Boys, games over 150: D. Thompson, 167, 163; S. Lyster, 198; M. Foster, 205, 174; D. Messner, 168; D. Alber, 166, 169; J. Collins, 158, 159; J. Boyer, 183, 156, 183; C. Johnson, 160; R. Weiner, 153, 155; M. Cook, 192, 173; C. Sannes, 174, 171; M. Burnell, 160; D. Craft, 211, 170.  
Boys, series over 440: D. Thompson, 478; S. Lyster, 490; M. Foster, 525; D. Messner, 462; D. Alber, 457; J. Boyer, 522; C. Johnson, 451; R. Weiner, 441; M. Cook, 526; C. Sannes, 486; D. Craft, 526, 514.

## Chelsea Lanes Mixed

Standings as of March 22

	W	L
Bushwackers	120	83
Fitzsimmons Excav'ing	117	79
Chelsea Lanes	115	88
The B's & D's	112	84
Doug's Painting	111	82
Locite	110 1/2	87 1/2
Meabon's	109 1/2	88 1/2
Wilson & McDonald	105	95
Marsh & Verwey	105	97
Four Roses	105	98
Ann Arbor Centerless	100 1/2	102 1/2
Happy - 4	99	104
Hopfuls	98 1/2	104 1/2
Bollinger Sanitation	92	111
G. & C. Ranch	87	116
The Four of Us	78	123
Ann Arbor Eagles	76	127
Jarvis & Neuman	68	128

Women, 150 games: R. Crawford, 189, 202, 151; C. Crawford, 163; L. Jarvis, 152; S. Ellenwood, 154; L. Alexander, 167, 158; D. Wilson, 157; J. Norris, 152, 150; D. Keizer, 156, 155; E. Packard, 157; R. Wheeling, 153, 191; J. Steinaway, 174, 169, 174; B. Torrice, 157; A. Rawson, 156; M. Sutter, 181, 178; P. Lewis, 156; A. Carpenter, 158; P. Hardin, 155; S. Hopkins, 202; B. Wisniewski, 158; B. Marsh, 152; D. Verwey, 153, 181, 176.  
Men, 175 games: K. Vassas, 185; D. Ellenwood, 178, 180; D. Alexander, 178, 202; S. Wilson, 178, 212; R. J. Norris, 176, 182; M. Packard, 194, 178; J. Collins, 181, 194; W. Steinaway, 188; A. Torrice, 204, 200, 206; L. Keizer, 191, 186; W. Bolanowski, 181; E. Vassas, 175; B. Eastman, 178; T. Wisniewski, 190, 207; S. Hopkins, 241; T. Marsh, 200.  
Women, 425 series: R. Crawford, 522; C. Crawford, 454; L. Alexander, 458; J. Norris, 448; D. Keizer, 437; K. Wheeling, 479; J. Steinaway, 517; B. Torrice, 429; M. Sutter, 481; S. Hopkins, 438; B. Wisniewski, 431; D. Verwey, 462.  
Men, 500 series: D. Ellenwood, 528; D. Alexander, 530; S. Wilson, 575; M. Packard, 538; J. Collins, 535; A. Torrice, 610; L. Keizer, 538; T. Wisniewski, 556; S. Hopkins, 561; T. Marsh, 507.

Women, 150 games: R. Crawford, 189, 202, 151; C. Crawford, 163; L. Jarvis, 152; S. Ellenwood, 154; L. Alexander, 167, 158; D. Wilson, 157; J. Norris, 152, 150; D. Keizer, 156, 155; E. Packard, 157; R. Wheeling, 153, 191; J. Steinaway, 174, 169, 174; B. Torrice, 157; A. Rawson, 156; M. Sutter, 181, 178; P. Lewis, 156; A. Carpenter, 158; P. Hardin, 155; S. Hopkins, 202; B. Wisniewski, 158; B. Marsh, 152; D. Verwey, 153, 181, 176.  
Men, 175 games: K. Vassas, 185; D. Ellenwood, 178, 180; D. Alexander, 178, 202; S. Wilson, 178, 212; R. J. Norris, 176, 182; M. Packard, 194, 178; J. Collins, 181, 194; W. Steinaway, 188; A. Torrice, 204, 200, 206; L. Keizer, 191, 186; W. Bolanowski, 181; E. Vassas, 175; B. Eastman, 178; T. Wisniewski, 190, 207; S. Hopkins, 241; T. Marsh, 200.  
Women, 425 series: R. Crawford, 522; C. Crawford, 454; L. Alexander, 458; J. Norris, 448; D. Keizer, 437; K. Wheeling, 479; J. Steinaway, 517; B. Torrice, 429; M. Sutter, 481; S. Hopkins, 438; B. Wisniewski, 431; D. Verwey, 462.  
Men, 500 series: D. Ellenwood, 528; D. Alexander, 530; S. Wilson, 575; M. Packard, 538; J. Collins, 535; A. Torrice, 610; L. Keizer, 538; T. Wisniewski, 556; S. Hopkins, 561; T. Marsh, 507.

## Leisure Time League

Standings as of March 21

	W	L
Four Stooges	73	35
Slowpokes	73	35
Unpredictables	61 1/2	46 1/2
Mistifs	60	48
The Alley Cats	55	53
The Freaks	52	56
Rug Rats	47	61
Sugar Loafers	46 1/2	61 1/2
The G's	41 1/2	66 1/2
The Lakers	30 1/2	77 1/2

Games of 140 and over: M. Maier, 169; S. Centilli, 148; D. Hafner, 157, 176; B. Mull, 169, 144; L. Haller, 155; M. Dault, 172; D. Dault, 150, 170, 173; P. Wirth, 157, 151; M. Usher, 161; G. Reed, 142; D. McAllister, 179; M. O'Donnell, 148; S. Wolfe, 154; M. Miller, 177, 144; Sharon Friday, 160; K. Haywood, 156; G. Wheaton, 147, 171; J. Anderson, 140; C. Engler, 185; M. R. Cook, 149, 145.  
200 games: M. Usher, 200.  
400 series: M. Maier, 438; D. Hafner, 467; B. Mull, 448; L. Haller, 409; M. Dault, 403; D. Dault, 493; P. Wirth, 437; M. Usher, 490; D. McAllister, 442; S. Wolfe, 408; M. Miller, 460; K. Haywood, 400; G. Wheaton, 450; C. Engler, 410; M. R. Cook, 409.

## SPORTS CORNER



TWO BIG QUESTIONS  
WHEN THE  
PROFESSIONAL  
FOOTBALL SEASON  
OPENS AND WILL REVOLVE  
AROUND

### BILL ARNSPARGER

NEW HEAD COACH OF THE NEW YORK GIANTS, CAN THE COACH WHO KNOWS HOW TO WIN TURN AROUND THE FORTUNES OF A TEAM THAT WENT 2-11-1 DURING THE RECENT SEASON AND HOW MUCH CREDIT FOR THE GREAT SUCCESS OF THE MIAMI DOLPHINS SHOULD BE CREDITED TO ARNSPARGER'S DEVELOPMENT OF THAT TEAM'S POWERFUL "NO NAME DEFENSE" ARNSPARGER CAME WITH DON SHULA TO MIAMI (FROM BALTIMORE) IN 1970, ONE SEASON AFTER THE DOLPHINS FINISHED WITH A 5-10-1 RECORD. SINCE THEN THE DOLPHINS HAVE ENDED FOUR SEASONS IN THE PLAYOFFS, THREE IN THE SUPER BOWL. ARNSPARGER, A NATIVE OF PARIS, KY., IS A FORMER UNIVERSITY OF KENTUCKY ASSISTANT COACH.

## Tri-City Mixed League

Standings as of March 22

	W	L
Real Estate One	70 1/2	45 1/2
Craft Appliance Co.	68	48
Sprague Buick & Olds	64 1/2	51 1/2
Portage Hardware	64	52
Chelsea Cleaners	63 1/2	52 1/2
Jiffy Mixes	63	53
Jiffy Market	63	53
3-D Sales & Service	58	58
Jerry & Doug's Quality	58	58
Foot Mobil	57	59
The Lively Ones	56 1/2	59 1/2
Stivers	56	60
Euler & Swersky	56	60
E. P. Smith Pallet Co.	55	61
4-W's	54	62
Hoover's Hustlers	53	63
4-B's	47	69
Detting & Gaddis	35	81

500 series, men: G. Allen, 524; F. Cooper, 500; D. Detting, 582; D. Detting, 511; R. Fike, 551; P. Fletcher, 522; W. Griffith, 503; R. Harms, 532; R. Lutz, 520; J. Stoffer, 535; H. Swersky, 572; R. V. Worden, 524.  
200 games, men: F. Cooper, 201; D. Detting, 203; R. Fike, 208; P. Fletcher, 210; R. Harms, 211; H. Swersky, 211, 203; D. Weston, 218; R. V. Worden, 223.  
450 series, women: B. Fike, 483; J. Harms, 462; C. Hodges, 475; K. Lentz, 450; J. Mock, 526; B. Parish, 476.  
150 games, women: V. Allen, 155; M. Ashmore, 159; J. Buckingham, 158; E. Detting, 204; G. Detting, 156, 156; B. Fike, 161, 175; P. Griffith, 164; J. Harms, 153, 168; C. Hodges, 181; J. Kaiser, 155; K. Lentz, 172; V. McNutt, 150; E. Miller, 170; J. Mock, 154, 195, 177; B. Parish, 171, 165; E. Tindall, 154; M. Weston, 161, 153.

## Charlie Brown and Snoopy's Friends

Standings as of March 23

	W	L
Pin Fighters	40	18
Bulldogs	37 1/2	20 1/2
Pink Panthers	35	23
Alley Cats	31 1/2	26 1/2
Vultures	29	29
Chelsea Champs	28 1/2	31 1/2
Tigers	27	31
Slammers	25	33
Chelsea Girls	20	38
Strikers	16 1/2	41 1/2

Girls, games 100 and over: M. Northrop, 157, 150; A. Umstead, 120; J. Atkinson, 106; R. Alexander, 112, 101; S. Miller, 110, 101; M. Alexander, 119.  
Boys, games 140 and over: D. Stock, 152; D. McGill, 151; D. Allen, 141; G. Egeler, 180; D. Wilson, 142, 143; J. Alexander, 145.

## Charlie Brown's Peanut League

Standings as of March 23

	W	L
Super Strikers	35 1/2	22 1/2
Pin Pushers	31	27
All Stars	28 1/2	29 1/2
Sore Thumbs	27 1/2	30 1/2
Pin Crackers	25 1/2	32 1/2
Fire Balls	24	34

Games 70 and over: A. Roe, 116, 88; M. Petch, 81, 98; P. Hoffman, 110, 91; K. Tobin, 83, 105; T. Greenleaf, 98; R. Krichbaum, 91, 104; J. Rowe, 98, 112; B. Rowe, 97, 78; J. Krichbaum, 112, 104; D. Rowe, 71; J. Brown, 76; J. Owings, 114, 90; R. Robeson, 82, 107; R. Lorenzen, 95; D. Alexander, 94, 80; S. Lorenzen, 77, 78; A. Fletcher, 91, 128; B. Behnke, 95, 108; E. Bristle, 113, 94; J. Packard, 75; M. Bulick, 101, 80; D. Detting, 91; J. Toon, 91, 79; J. Verwey, 117, 89; J. Miller, 70.  
Series 100 and over: A. Roe, 204; J. Hoffman, 108; M. Petch, 179; P. Hoffman, 201; K. Tobin, 188; T. Greenleaf, 144; R. Krichbaum, 195; J. Rowe, 211; B. Roe, 175; J. Krichbaum, 216; D. Rowe, 123; P. Owings, 107; J. Brown, 136; J. Owings, 204; R. Robeson, 189; K. Fletcher, 127; R. Lorenzen, 162; D. Alexander, 174; S. Lorenzen, 156; A. Fletcher, 219; D. Waldyke, 131; B. Behnke, 203; E. Bristle, 207; J. Packard, 144; M. Bulick, 191; D. Detting, 158; J. Toon, 170; J. Verwey, 206; L. Miller, 131.

## Chelsea Industrial Suburban

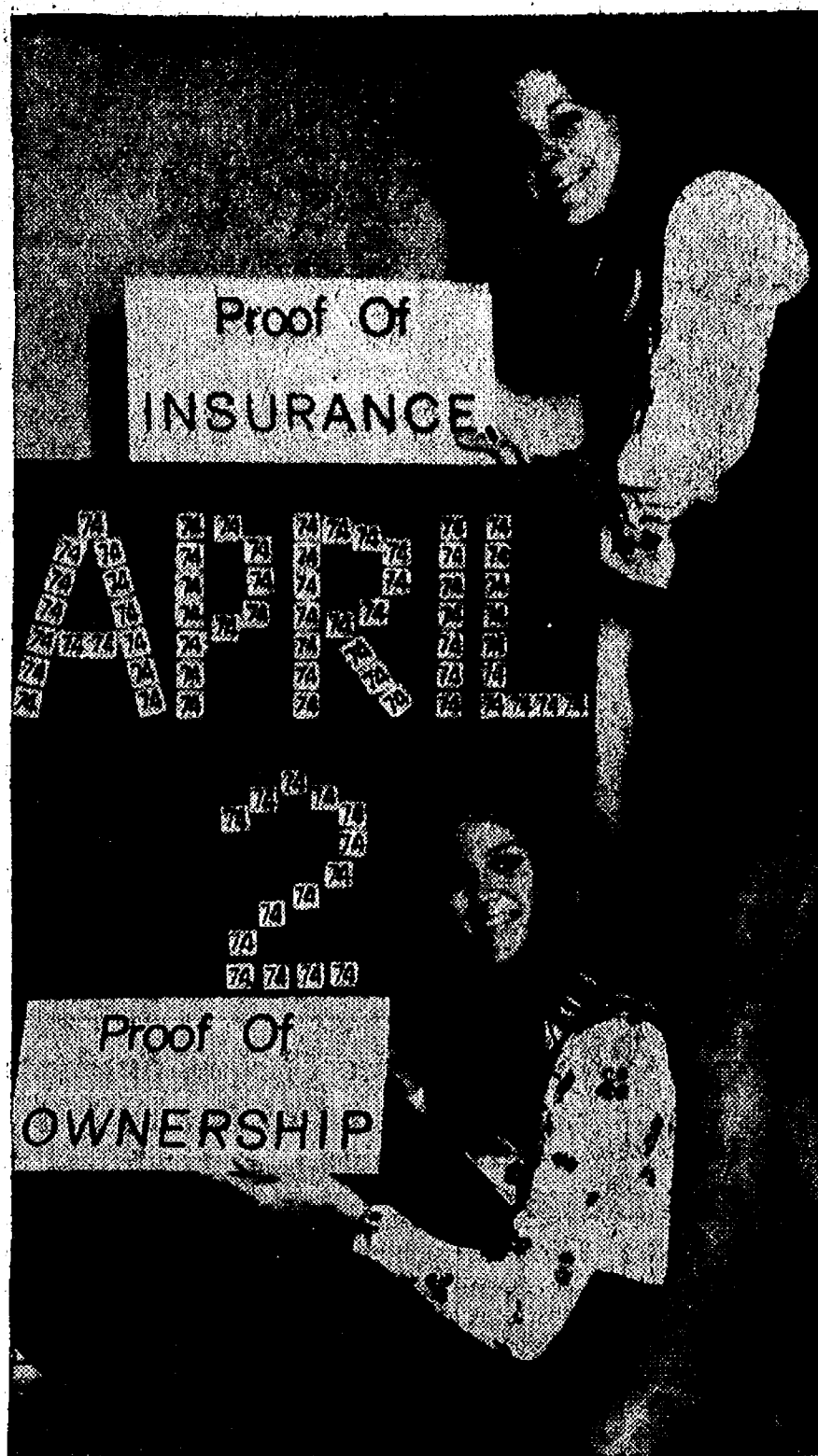
Standings as of March 21

183; J. Rowe, 211; B. Roe, 175;  
Krichbaum; 216; D. Rowe, 123;  
Rowe, 107; J. Brown, 136;  
Owings, 204; R. Robeson, 189;  
Fletcher, 127; R. Lorenzen, 189;  
D. Alexander, 174; S. Lorenzen, 189;  
A. Fletcher, 219; D. Waldyke, 136;  
B. Behnke, 203; E. Bristle, 203;  
J. Packard, 144; M. Bulick, 189;  
D. Detling, 153; J. Toon, 170;  
Verwey, 206; L. Miller, 131.





PRESIDENT HERB DUMBLE of the Washtenaw Livestock Council hands over the microphone to Howard Heath, WPAG farm editor, who acted as program master of ceremonies for last Saturday's Livestock Council Banquet. Entertainment for the evening was provided by "The Harmony Hounds," a barbershop quartet group from Battle Creek.



**TAB DEADLINE NEARS:** Michigan motorists who haven't purchased 1974 license plate tabs are advised by Automobile Club of Michigan secretaries Pam Skrzycki (standing) and Delia Dion that all passenger cars must have them displayed by April 2. Pam reminds motorists to bring in either the prepared renewal form which was mailed to most vehicle owners last fall by the Department of State, last year's registration or the certificate of vehicle title (proof of ownership). Delia says don't forget to bring proof of public liability and property damage insurance. Approximately 900,000 Michiganders will buy new license tabs between now and April 1. This is about one of every five passenger car owners in the state. Normally, about one of every seven passenger car owners waits until the last minute before getting license plates. Auto Club blames the uncertainties that have been associated with the energy crisis for keeping many motorists from buying tabs. This is the second time in the last three years that tabs are being issued instead of license plates. Vehicle owners will receive one tab, which is to be affixed to the lower right corner of the rear license plate.

## Michigan Bell Starts Record \$420 Million Building Program

Michigan Bell reported today it has embarked on a record construction program this year that calls for the expenditure of nearly \$420 million for the expansion and improvement of communications facilities throughout the state.

David K. Easlick, company president, said that Michigan Bell has committed itself to the record outlay even though "neither the immediate economic outlook nor the company's poor earnings would ordinarily encourage an investment of this magnitude."

Easlick said the construction program is based on forecasts that, despite the present instability in the economy, there will be continuing long-term growth in telephone customers and calling, requiring major expansion of communications facilities.

"We must look ahead and plan for the future," Easlick said. "It is less costly to anticipate future growth and to build now than it would be to engage in a 'crash' construction program at a later date," he said. "And, in the long run, a 'catch-up' construction program would cost us and our customers more money and wouldn't satisfactorily meet our service obligations to them."

Stressing the importance of the company's program to the economy, Easlick said it would directly support some 20,000 jobs—half of them in Michigan—in the telephone company and in such industries as construction and manufacturing.

Easlick pointed out that providing communications services requires a lead time of months and even years in some instances in the planning, engineering and manufacturing of the increasingly complex equipment needed to meet customer demands.

"And, we have to keep ahead of population shifts and local growth too," he said. "It costs money to meet custo-



### BROWNIE TROOP 145

In the weekly meeting of Brownie Troop 145, we talked about Girl Scouts all over the world. Then we had a friendship ceremony.

We made favors for the Huron Valley Girl Scout Council spring luncheon, to be held in Chelsea March 27.

Maria Antonia Kovacevich, an exchange student from Argentina, visited us and sang some songs in Spanish. She told us about Girl Scouts in Buenos Aires.

Halle Schmidt, scribe

### TROOP 688

Girl Scout Troop 688 had another first aid lesson Thursday and learned how to splint an arm. After the meeting, we picked up our cookies and we are delivering them.

Sabrina Woodward, scribe

### JUNIOR TROOP 442

Junior Troop 442 went bowling at Chelsea Lanes Monday. Some of the girls got pretty good scores. All of us got to play one game, and we still stayed within our time limit. The leaders, Mrs. Wilson and Mrs. Kvarnberg, provided transportation from the church, where we met, to the bowling alley, and then back to the church. We really had a good time.

Sara Conner, scribe

Subscribe today to The Standard!

## BOWLING

### Chelsea Suburban Standings as of March 20

	W	L
Chelsea Drug	119	84
State Farm	112	91
Waterloo Garage	112	84
Dairy Queen	111	92
Pittsfield Plastics	107	93
Foor Mobil	103	93
Chelsea State Bank	97	106
Klink Excavating	96	107
Dancer's	92	111
Dana Corp.	88	115
Chelsea Lanes	87	116
Frislinger Realty	87	116
425 series and over: P. Elliott, 545; E. Miller, 466; J. Burnett, 457; N. Collins, 449; A. Hocking, 519; V. Harvey, 486; E. Figg, 435; F. Cole, 487; D. Kinsey, 438; L. Fulcher, 432; T. Monroe, 430; G. DeSmither, 472; G. Baczynski, 449; B. Smith, 483; C. Stoffer, 452; D. Hawley, 458; S. Bowen, 452; N. Packard, 456; F. Fredrick, 444; J. Stoll, 435; M. De La Torre, 472; C. Peterson, 494; L. Beeman, 471.		
150 games and over: P. Elliott, 180, 156, 209; S. Ratzlaff, 154; J. Burnett, 189, 168; E. Yocum, 151; V. Harvey, 163, 169, 154; A. Hocking, 160, 159, 200; K. Snyder, 152; F. Cole, 177, 168; P. Harook, 169; D. Kinsey, 155; L. Fulcher, 158, 154; T. Monroe, 155, 160; G. DeSmither, 158, 176; G. Baczynski, 161; B. Smith, 194, 159; C. Stoffer, 137, 162; D. Hawley, 167; B. Krichbaum, 153; S. Bowen, 155, 158; N. Packard, 173, 152; A. Coppernoll, 160; F. Fredrick, 154, 152; M. Orowski, 161; J. Stoll, 178; M. De La Torre, 166, 184; C. Peterson, 153, 156, 170; J. Schulze, 165; L. Beeman, 161, 161.		

### Nite Owl League Standings as of March 25

	W	L
Dault & LeVan	75	41
Steele's Heating	75	41
Kirby	70 1/2	45 1/2
Ted's Standard	69	47
S. Boy Take-Out	68 1/2	47 1/2
Chelsea Finance	61	55
Wahl's Oil	61	55
McCalla Mobile Feeds	57	59
Mark 5	57	59
Foster's Men's Wear	54	62
Sherlock Homes	51 1/2	64 1/2
A-M Corp.	51	65
Cavanaugh Lake No. 1	51	65
Cavanaugh Lake No. 2	50	66
Alber's Orchard	50	66
Slocum's Construction	48 1/2	67 1/2
Heller Electric	47	69
Pump & Pantry	44	72
200 games and over: D. Buku, 212, 201; G. Beeman, 203; T. Steele, 200; G. Packard, 200, 208, 204; J. Eder, 200; S. Wilson, 202, 201; L. McKinnon, 201; M. Ford, 214; G. Reithmiller, 221.		

500 series and over: R. Herrst, 516; J. Elliot, 573; G. Rentschler, 510; G. Rietmiller, 527; B. Maier, 534; T. Helmboldt, 519; S. Wilson, 530; L. McKinnon, 515; M. Ford, 574; M. Nevehr, 514; D. Alexander, 546; G. Wiley, 515; G. Beeman, 581; A. Peterson, 523; T. Steele, 502; J. Bergman, 544; T. Mead, 584; C. Young, 546; J. Dault, 503; L. Heller, 564.

600 series and over: G. Packard, 612; D. Buku, 600.

### Rolling Pin League Standings as of March 26

	W	L
Egg Beaters	70	42
Coffee Cups	67	45
Kookie Kutters	64 1/2	47 1/2
Spooners	64	48
Brooms	62	50
Dish Rags	62	50
Grinders	61 1/2	50 1/2
Pots	55	57
Mixers	45 1/2	66 1/2
Kitchen Kapers	43	69
Jolly Mops	40	72
Mopper Uppers	37 1/2	74 1/2

425 and over series: J. Edick, 483; M. Eeles, 461; E. Williams, 425; S. Bowen, 450; K. Del Prete, 434; L. Northrop, 429; A. Hadley, 449; K. VanDemark, 480; C. Shepherd, 483; N. Kilpatrick, 428; R. Foster, 433; J. Shepherd, 441; E. Reynolds, 464; P. Harook, 426; D. McAllister, 449; K. Brettschneider, 433; J. Johnson, 434; V. McNutt, 425.

145 and over games: J. Edick, 149, 156, 178; M. Eeles, 168, 169; E. Williams, 147; N. Hui, 155; M. Ringe, 149; G. Greenleaf, 167; H. Ringe, 146; K. DelPrete, 154, 161; L. Northrop, 153; A. Hadley, 164, 160; K. Van Demark, 190, 159; C. Shepherd, 189, 170; N. Kilpatrick, 160; R. Foster, 159; J. Shepherd, 177, 160; G. Brier, 149; E. Reynolds, 154, 164, 146; P. Harook, 164; G. Weiner, 148; G. Klink, 153, 149;



PROJECT CONCERN, headed by Dr. James Turpin, pictured above, aids scores of impoverished elderly citizens in Appalachia with its doctors, nurses, dentist and dental hygienist. The project is locally assisted by the annual "Walk for Mankind," planned for April 20 in Pinckney by the Pinckney Jaycees.

## Pinckney Jaycees Sponsoring Walk for Mankind April 20

Again this year, Pinckney Jaycees are sponsoring the "Walk for Mankind," which brings in much needed funds for "Project Concern," a weapon against poverty, ignorance, and disease.

Project Concern today maintains clinics and hospitals in Appalachia, the Navajo nation, Ethiopia, Hong Kong, Vietnam, and Mexico. The group was founded in 1961 by James W. Turpin, M.D., a south California physician.

The Walk for Mankind will begin in Pinckney on April 20 and will last as long as participants can, up to approximately 20 miles. Jaycees will provide band-aids and other pertinent first aid gear, re-

freshments and traffic control will also be handled by Pinckney Jaycees and Jaycettes.

Prizes will be awarded to the walkers who bring in the most money, the most sponsors, and the top 10 finishers.

Sponsor sheets will be available in most public places of business in Pinckney as of April 1, or may be obtained by writing: Walk for Mankind, 238 Mason Rd., Howell 48843.

## Henry Block has 17 reasons why you should come to us for income tax help.

Reason 5. If the IRS should call you in for an audit, H & R Block will go with you, at no additional cost. Not as a legal representative... but we can answer all questions about how your taxes were prepared.



**H&R BLOCK**  
THE INCOME TAX PEOPLE  
NO APPOINTMENT NECESSARY

105 N. Main St., Chelsea Phone 475-2752

## Save on fuel costs . . . modernize your heating system NOW!

### IS YOUR FURNACE MORE THAN 10 YEARS OLD?

Has it lost its efficiency? Is it too young to smoke but does heat? Research shows us that modern heat engineering saves real money in better combustion, and more efficient use of heat.

Your old-fashioned, worn out furnace may be costing you needless dollars every year. Call us—let us show you what modern science has given home-owners—the International 20-year warranty, the heavier gauge metals, the exclusive fuel-burning features—resulting in the most comfortable, draft-free automatic heat ever!

## INTERNATIONAL

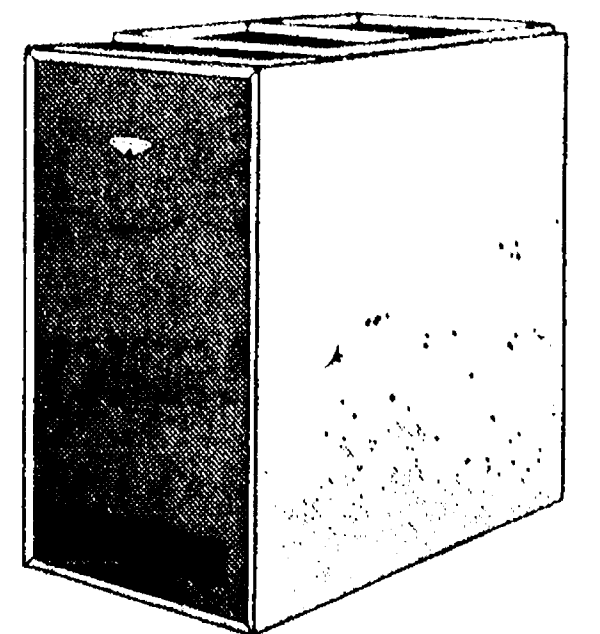
### FREE

### HEATING SURVEY

Let us analyze your present system and suggest repairs or cost-saving ideas. No charge of course, for our 14-point check-up.

## CHELSEA HEATING CO.

475-2419



## DEXTER LOCKER DUNBAR MEATS

DEXTER  
8083 MAIN ST.  
426-8466

1431 E. MICHIGAN  
YPSILANTI  
483-7466

## MEATS THAT ARE GOOD

## FILL YOUR FREEZER NOW WE HAVE SIDES - HINDS - FRONT

## CUSTOM SLAUGHTERING & PROCESSING





**TOP AWARD WINNERS:** Matthew Villemure (left) and Frederick Winkle, Palmer Ford in Chelsea, and their wives attend a Ford Customer Service Division awards banquet at the Detroit Athletic Club. Both dealership employees won Ford's top "customer satisfaction" incentive award for automotive service employees—a vacation-for-two in

Spain. They are among only 175 grand prize winners competing against 44,000 Ford and Lincoln-Mercury dealership service employees across the country. The Villemures live at 334 Washington St. Mr. and Mrs. Winkle live at 5420 Highway M-106, Stockbridge.

## Palmer Ford Servicemen Cited For Outstanding Performance

Matthew Villemure of 334 Washington St. and Frederick Winkle of 5420 Highway M-106, Stockbridge, have been recognized among the nation's top-rated automotive service employees.

Both Villemure and Winkle, who work at Palmer Ford, have won grand prizes—a vacation for two in Spain—in a Ford Customer Service Division award program for employees of Ford and Lincoln-Mercury dealerships. They also received special plaques recognizing outstanding performance.

The Ford program, the nation's first incentive plan for dealership

service personnel, allows customers to complete "report cards" indicating their satisfaction with the service work done on their cars.

Philip E. Benton, Jr., Ford Customer Service Division general manager, said, "Our industry has been providing incentive awards to dealership sales personnel for years. We feel top-performing service employees should be rewarded and recognized as well. Villemure and Winkle can be justly proud of being among only 175 national grand prize winners who competed with 44,000 Ford and

Lincoln-Mercury service employees across the country."

## Taylor Man Dies in Crash On Territorial

A Taylor man was killed late Sunday afternoon when a car in which he was a passenger failed to negotiate a curve on N. Territorial Rd., and crashed into a tree.

Pronounced dead at the scene of the accident was Gerald Lester, 20, of 15061 Aubrey Lane, Taylor. The driver, Hilary Van Dooren, Jr., 23, of 48930 Denton Rd., Belleville, was transported to University Hospital in Ann Arbor, where he remained in critical condition late Tuesday afternoon.

Washtenaw County Sheriff's deputies said that Van Dooren apparently was traveling at a speed too fast for the winding road when he went into a curve near Dexter Township Rd., lost control, and sped off the side of the roadway, where the vehicle struck a tree.

## School Board Briefs

Present at the special meeting of the Board of Education of the Chelsea School District on Tuesday, March 26, were President Haselschwardt and Trustees Daniels, Irwin, Schafer, Koenn, Hodgson, and Stirling.

The meeting was called to order at 8:05 p.m. by President Haselschwardt.

The board spent three hours in discussion of the curriculum for the 1974-75 school year, including areas of music, English, foreign language, and math.

A lengthy discussion was held regarding results of the special millage election. A resolution was adopted requesting the earliest possible date to hold a special operational millage election from the County Election Committee.

The board certified the results of the special operational millage election, held on March 26, as yes; 405; no; 897; spoiled: 16.

President Haselschwardt recessed the meeting at 1:30 a.m. until 7 p.m. on Wednesday, March 27, in the board room of the high school administration building.

### MORE THAN SUN

The Caribbean nation of Jamaica attracts more than 500,000 visitors a year, but the island's growing economy is based on more than just tourism. Jamaica now has more than 1,500 manufacturing and service businesses, many of which are subsidiaries of U.S. firms.

## All Speed Signs Changed in Seven Full Work Days

Lansing—The entire 9,250-mile state highway system has been posted for maximum speed limit of 55 miles an hour, the Department of State Highways and Transportation reports.

Approximately 4,700 speed signs were changed in seven work days, signifying the 55 mph limit. Estimated cost of the project was \$80,000.

The U.S. Department of Transportation said that states not complying with the lower (55 mph) speed limit, risked the loss of federal funds for highway construction. Michigan's federal highway construction allocation amounts up to \$200 million a year.

## Three Chelsea Students Named to Dean's List At Western Michigan

Three Chelsea area natives were among more than 1,800 Western Michigan University students named to the Dean's List for the recent winter term. To achieve such recognition, students must maintain a 3.5 grade point average for at least 14 credit hours of class work.

Chelsea students so recognized were Phyllis H. Buss, 119 Clardale Ct., daughter of Mr. and Mrs. Henry Buss; Eileen Kay M. Evans, 13225 E. Old US-12, daughter of Mr. and Mrs. James Evans; and Norman W. Schafer, 1575 Pierce Rd., son of Mr. and Mrs. Robert Schafer.

Telephone Your Club News To 475-1371



**WASHTENAW COUNTY LIVESTOCK COUNCIL OFFICERS,** present at the Livestock Council Banquet last Saturday at Saline High school, are front row, from left, Harold Haeussler, treasurer,

Ken Hieber, Ralph McCalla, and Herb Duible, president. In back, from left, are Bill Nixon, Carl Lesser, vice-president, Stan Poet, John Brooks, Nick Heller, and Bill Ames, secretary.

## FOOTBALL JERSEYS

Numeral collection: 75-76-77-78.

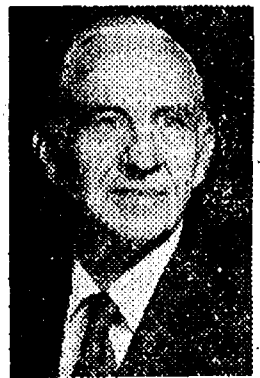
Navy or Gold.

**\$6.95**

## STRIETER'S MEN'S WEAR

"The Place To Go for Brands You Know"

Want to sell a car? Try a Standard Want Ad!



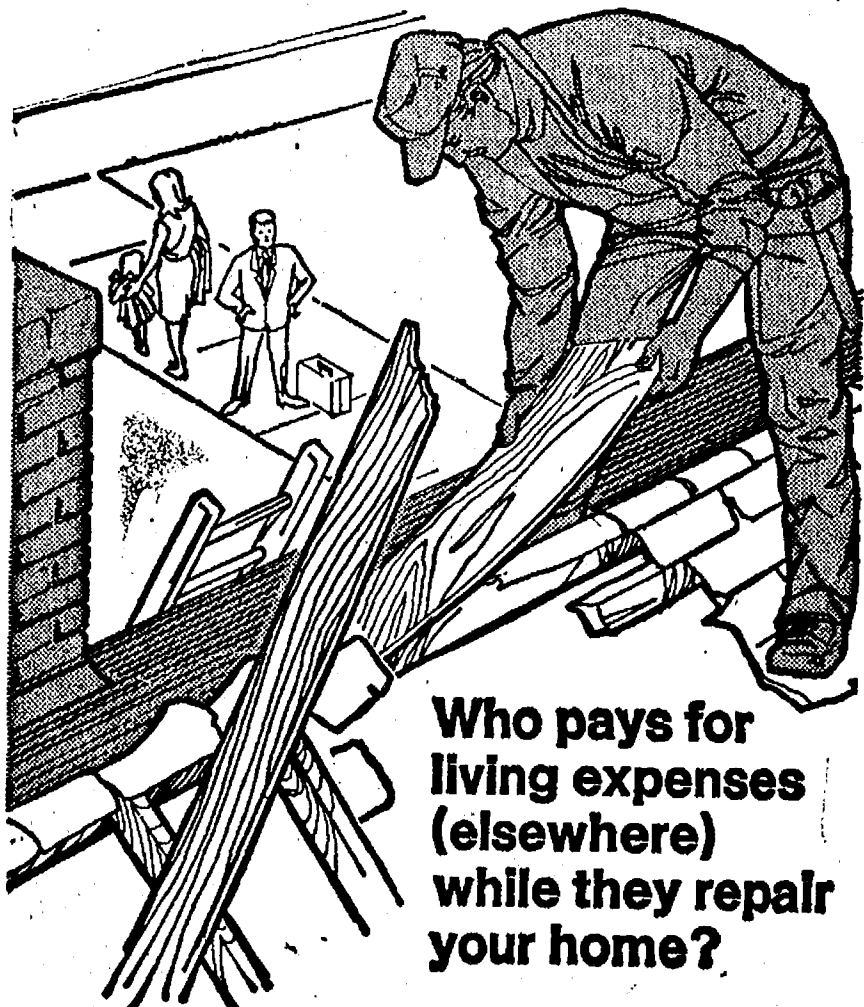
## WANTED

4-bedroom home on 5 or 10 acres in Chelsea School District. Have client anxious to move.

Call me personally at

**Real Estate One.**  
OF WASHTENAW

**AL KLEIS** REALTORS  
475-7322 1196 M-52, Chelsea 475-8693



**Who pays for living expenses (elsewhere) while they repair your home?**

Most policies provide the coverages you expect—fire, lightning, storms, riots, vandalism and the like. They cover the cost of repairs due to these losses. But have you thought about the cost of living elsewhere if your home has to be repaired or rebuilt? It could run into hundreds of dollars. Or, it could be covered in black and white in our Homeowners Policy, so we would pay those extra living expenses! Give us a call. We'll put your home insurance all together in one policy for convenience and saving's sake.

**it's better altogether**

**A. D. MAYER AGENCY, INC.**

115 PARK ST., CHELSEA  
BOB BARLOW, AGENT  
PHONE 475-2030

**Auto-Owners Insurance**  
Life Home Car Business

## Letters to the Editor

To the Editor,

I'm writing in regard to the kidnapping of Patricia Hearst. I'm very upset about the whole bizarre deal. I pray to God that the girl will be returned safe and unharmed but what are they going to do about the people that did it? Are we just going to sit back and watch these people get away with these inhuman actions? The people that do such terrible things deserve to be severely punished. They bring it upon themselves. So, in my eyes, capital punishment is the answer! The men that kidnapped John Paul Getty, have they been caught or punished?

The innocent people are getting ripped-off and as far as I'm concerned, something ought to be done about it and soon!

Concerned,  
Karen Trinkle.

## Mobil-Toons

By GLENN

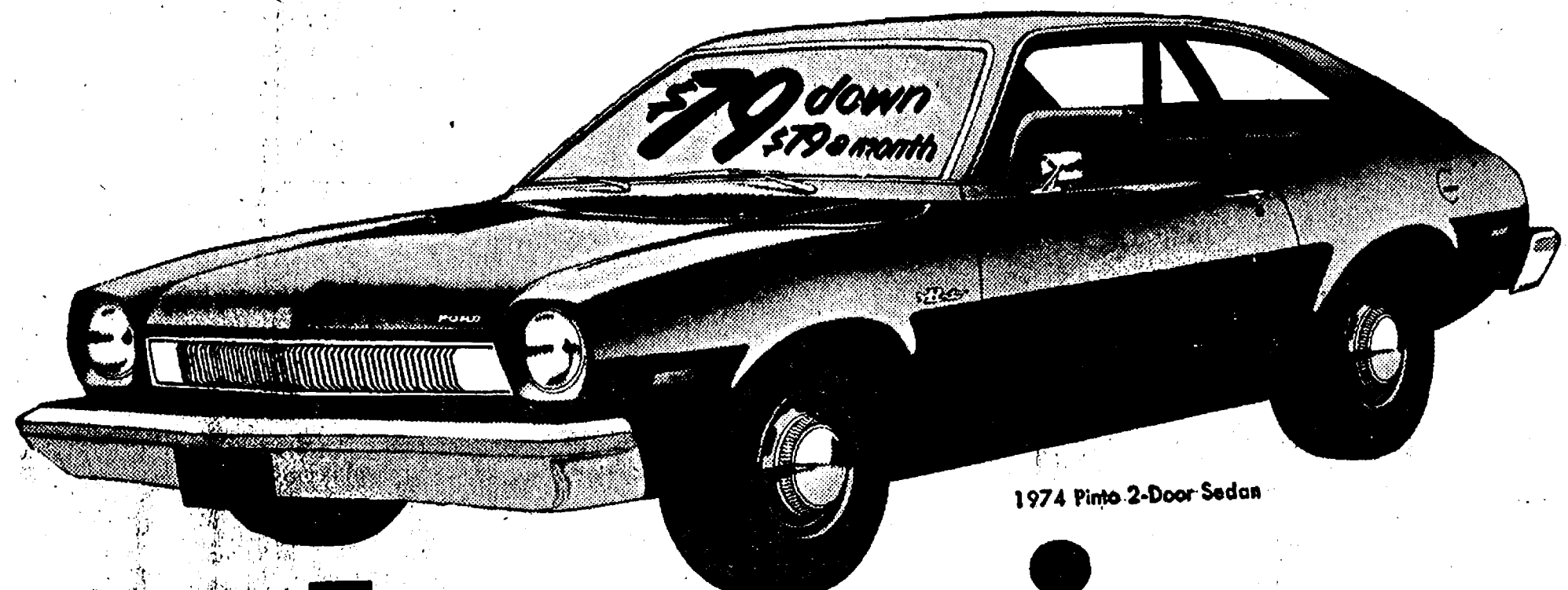


"Watch that hood . . . it slips."

We always watch out for your safety!

**GLENN'S MOBIL SERVICE**

1629 M-52 & I-94  
CHELSEA, MICHIGAN  
Phone 475-1767  
GLENN HEIM  
PROP.



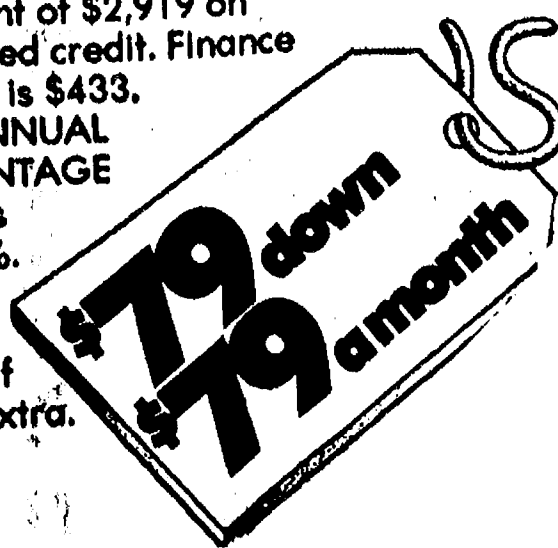
**Low price**



**No price**

### A price that's hard to beat.

The price is just \$79 down and \$79 a month. It sounds incredible, but it's true. Actual payment is \$78.89 for 36 months. Payment plan is based on the sticker price of \$2,485 including freight, total deferred payment of \$2,919 on approved credit. Finance charge is \$433. The ANNUAL PERCENTAGE RATE is 11.08%. Taxes, dealer prep, if any, extra.



### A Ford Dealer is hard to beat.

What kind of person would give you such a good price on a Pinto? Or give your kids such a cute puppet free? A Ford Dealer. But then what would you expect from the people who sell more cars and trucks than anyone around. And why would he give you and your kids good prices and a free puppet? Simply because he's not just a car dealer. He's a Ford Dealer.

### A free puppet is hard to beat.

And just for stopping in, your Ford Dealer will give you this cute blue Ford car puppet free. It's soft and blue and fuzzy and looks like the little blue Ford car on TV. Your kids will love him. Puppet is free at participating Ford Dealers. Limit one per licensed driver as long as supply lasts. Offer ends May 4.



Not just a car dealer.  
A Ford Dealer.

**PALMER MOTOR SALES, INC.**  
CHELSEA, MICHIGAN